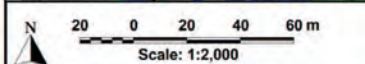


Indicative Depth of Inundation (m)

- < 0.05
- 0.05 to 0.10
- 0.10 to 0.20
- 0.20 to 0.30
- 0.30 to 0.40
- 0.40 to 0.50
- 0.50 to 0.60
- 0.60 to 0.70
- 0.70 to 0.80
- 0.80 to 0.90
- 0.90 to 1.00
- > 1.00

Flow Direction Arrow



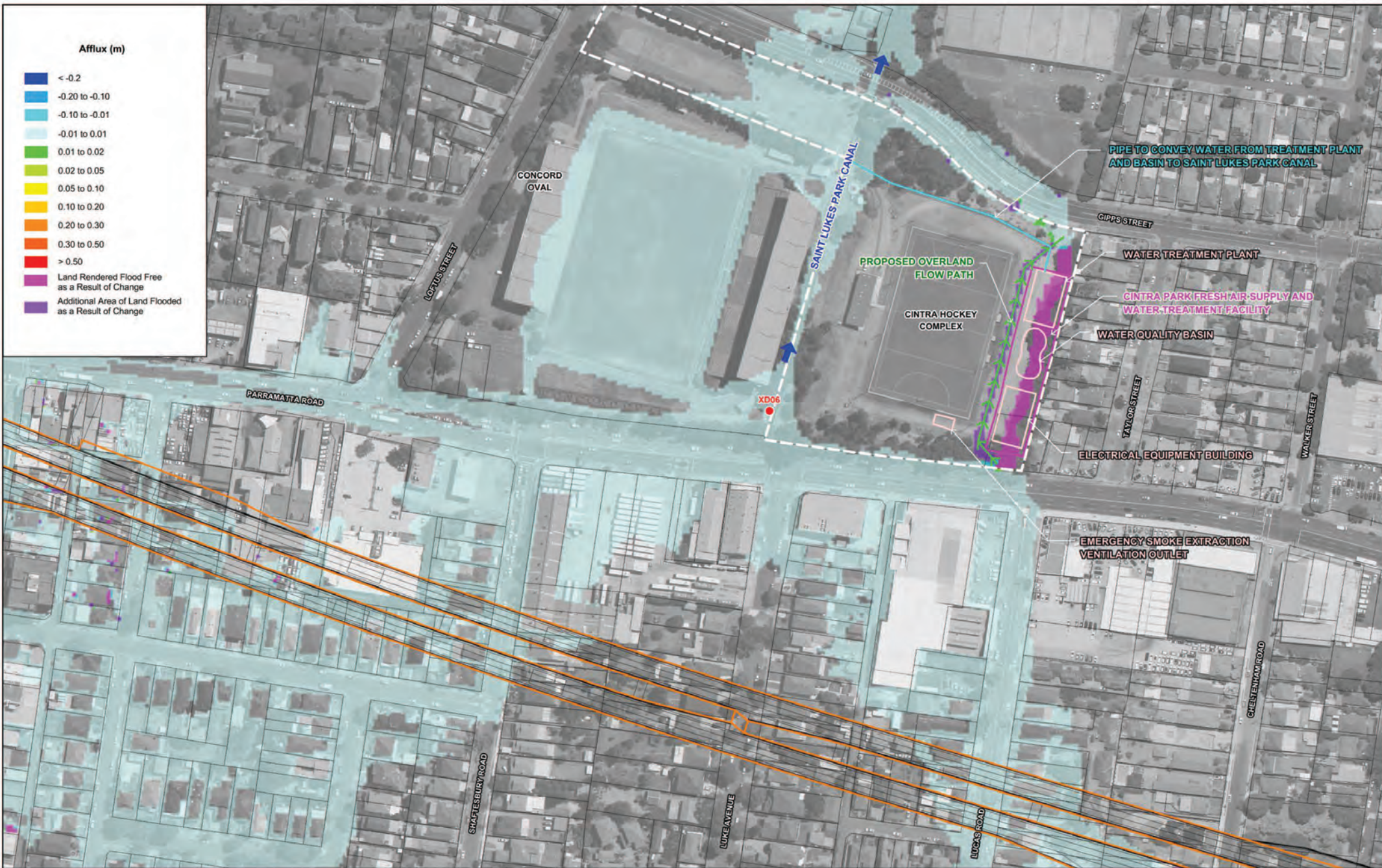
LEGEND

- Road Design Strings
- Bridge
- Tunnel Dive Structure
- Cut and Cover Tunnel
- Driven Tunnel
- Project Boundary
- Water Surface Elevation Contours (m AHD)
- XD11 Location of Existing Cross Drainage Structures along M4 Motorway/Parramatta Road

WESTCONNEX M4 EAST EIS  
SURFACE WATER: FLOODING AND DRAINAGE

Figure D21

POST-CONSTRUCTION FLOODING PATTERNS  
CINTRA PARK FRESH AIR SUPPLY AND WATER TREATMENT FACILITY  
20 YEAR ARI



**Afflux (m)**

- < -0.2
- 0.20 to -0.10
- 0.10 to -0.01
- 0.01 to 0.01
- 0.01 to 0.02
- 0.02 to 0.05
- 0.05 to 0.10
- 0.10 to 0.20
- 0.20 to 0.30
- 0.30 to 0.50
- > 0.50
- Land Rendered Flood Free as a Result of Change
- Additional Area of Land Flooded as a Result of Change

CONCORD OVAL

SAINT LUKES PARK CANAL

PROPOSED OVERLAND FLOW PATH

CINTRA HOCKEY COMPLEX

PIPE TO CONVEY WATER FROM TREATMENT PLANT AND BASIN TO SAINT LUKES PARK CANAL

WATER TREATMENT PLANT

CINTRA PARK FRESH AIR SUPPLY AND WATER TREATMENT FACILITY

WATER QUALITY BASIN

ELECTRICAL EQUIPMENT BUILDING

EMERGENCY SMOKE EXTRACTION VENTILATION OUTLET

PARRAMATTA ROAD

LOPLUS STREET

GIPPS STREET

TAYLOR STREET

WALKER STREET

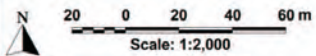
SHAFTESBURY ROAD

LUCK AVENUE

LUCKAS ROAD

CHESTERHAM ROAD

XD06



**LEGEND**

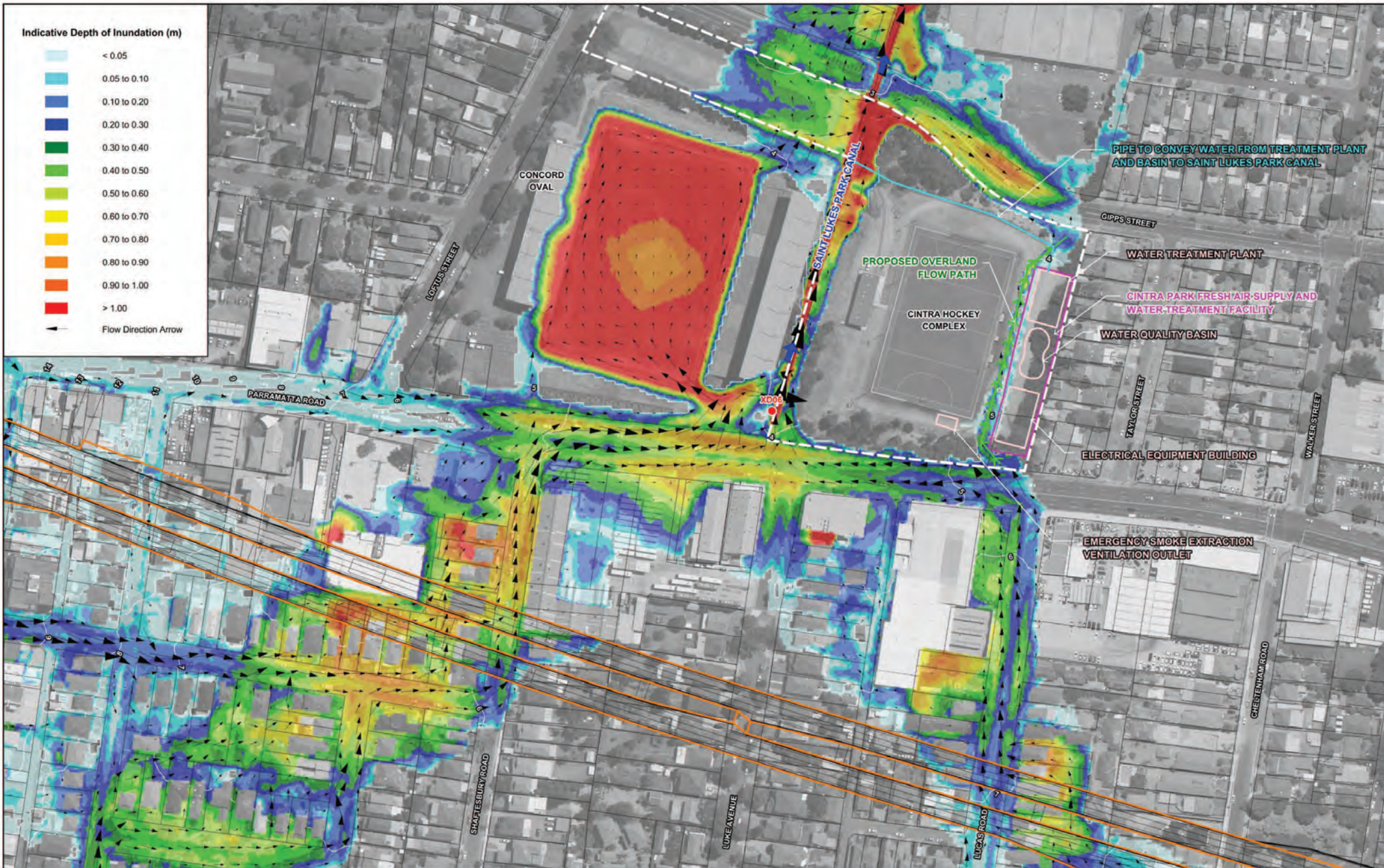
- Road Design Strings
- XD11 Location of Existing Cross Drainage Structures along M4 Motorway/Parramatta Road

- Project Boundary
- Bridge
- Tunnel Dive Structure
- Cut and Cover Tunnel
- Driven Tunnel

**WESTCONNEX M4 EAST EIS  
SURFACE WATER: FLOODING AND DRAINAGE**

Figure D22

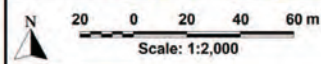
IMPACT OF M4 EAST POST-CONSTRUCTION ON FLOOD BEHAVIOUR  
CINTRA PARK FRESH AIR SUPPLY AND WATER TREATMENT FACILITY  
20 YEAR ARI



Indicative Depth of Inundation (m)

- < 0.05
- 0.05 to 0.10
- 0.10 to 0.20
- 0.20 to 0.30
- 0.30 to 0.40
- 0.40 to 0.50
- 0.50 to 0.60
- 0.60 to 0.70
- 0.70 to 0.80
- 0.80 to 0.90
- 0.90 to 1.00
- > 1.00

Flow Direction Arrow



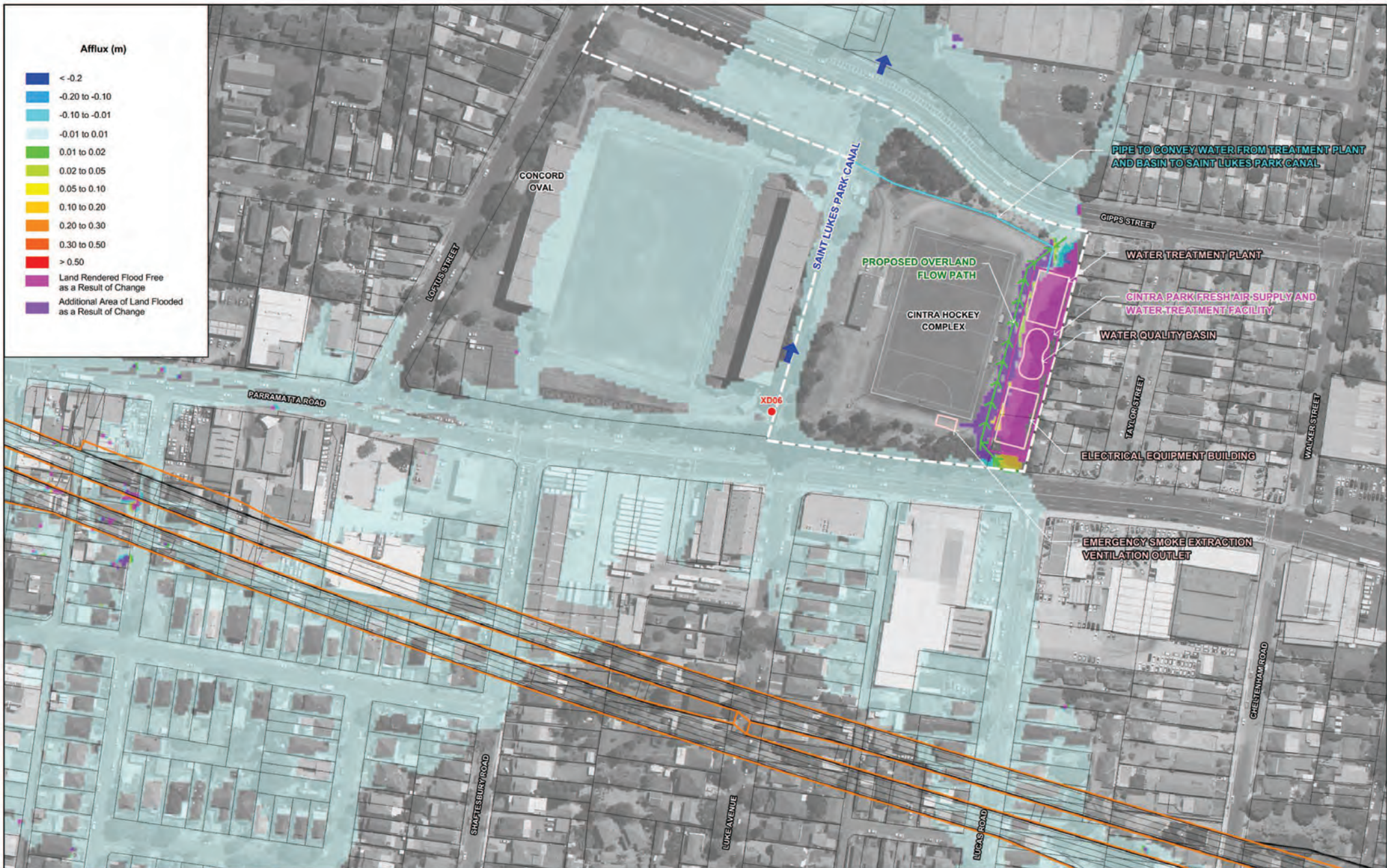
- LEGEND**
- Road Design Strings
  - Water Surface Elevation Contours (m AHD)
  - XD11 Location of Existing Cross Drainage Structures along M4 Motorway/Parramatta Road

- Project Boundary
- Bridge
- Tunnel Dive Structure
- Cut and Cover Tunnel
- Driven Tunnel

**WESTCONNEX M4 EAST EIS  
SURFACE WATER: FLOODING AND DRAINAGE**

Figure D23

POST-CONSTRUCTION FLOODING PATTERNS  
CINTRA PARK FRESH AIR SUPPLY AND WATER TREATMENT FACILITY  
200 YEAR ARI



**Afflux (m)**

- < -0.2
- 0.20 to -0.10
- 0.10 to -0.01
- 0.01 to 0.01
- 0.01 to 0.02
- 0.02 to 0.05
- 0.05 to 0.10
- 0.10 to 0.20
- 0.20 to 0.30
- 0.30 to 0.50
- > 0.50
- Land Rendered Flood Free as a Result of Change
- Additional Area of Land Flooded as a Result of Change

PIPE TO CONVEY WATER FROM TREATMENT PLANT AND BASIN TO SAINT LUKES PARK CANAL

CONCORD OVAL

SAINT LUKES PARK CANAL

PROPOSED OVERLAND FLOW PATH

CINTRA HOCKEY COMPLEX

WATER TREATMENT PLANT

CINTRA PARK FRESH AIR SUPPLY AND WATER TREATMENT FACILITY

WATER QUALITY BASIN

ELECTRICAL EQUIPMENT BUILDING

EMERGENCY SMOKE EXTRACTION VENTILATION OUTLET

PARRAMATTA ROAD

LOTUS STREET

GIPPS STREET

TAYLOR STREET

WALKER STREET

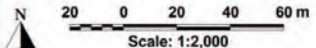
GREENHAM ROAD

LUCKS ROAD

LUKE AVENUE

SHAFTESBURY ROAD

XD06



**LEGEND**

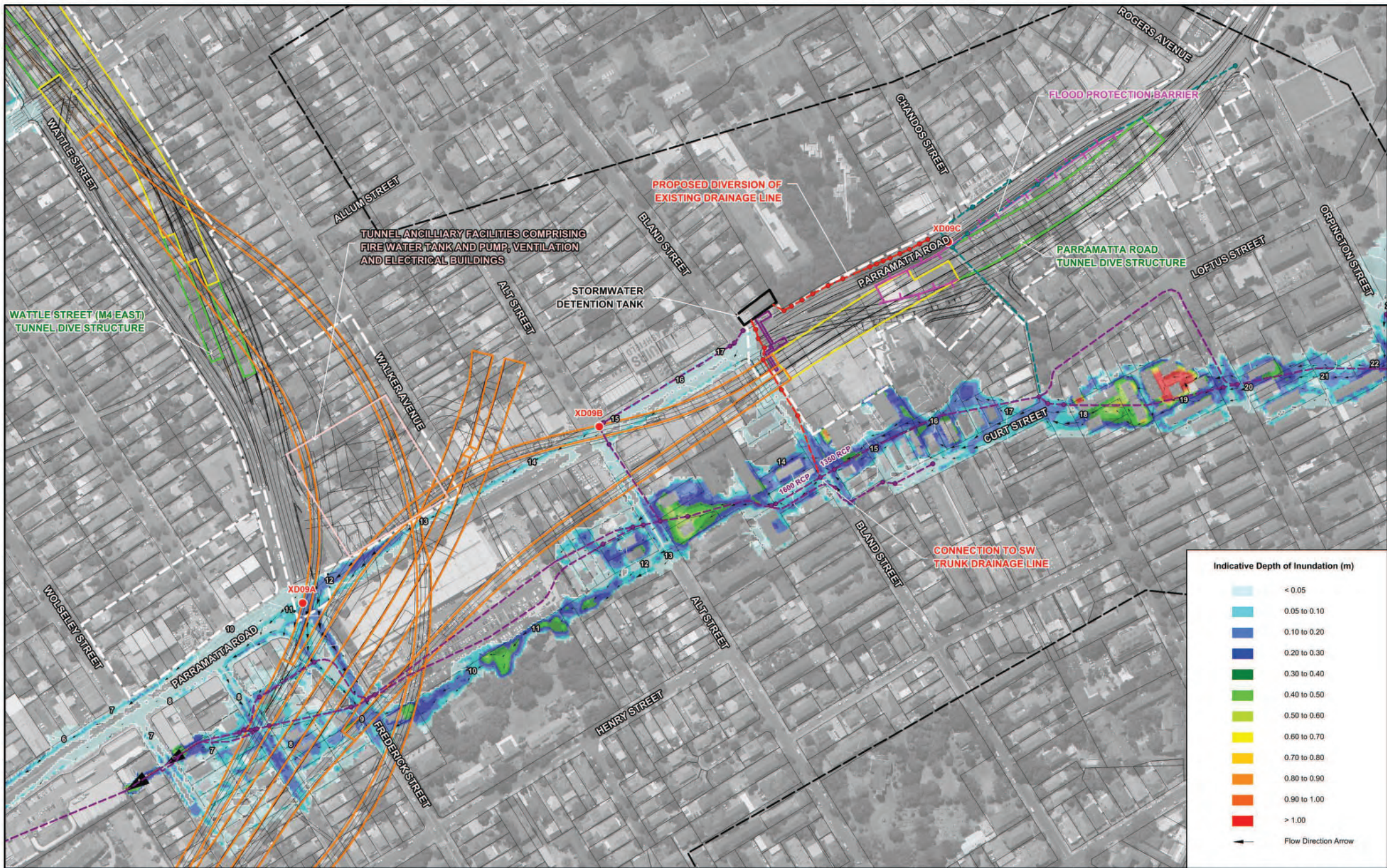
- Road Design Strings
- XD11 Location of Existing Cross Drainage Structures along M4 Motorway/Parramatta Road

- Project Boundary
- Bridge
- Tunnel Dive Structure
- Cut and Cover Tunnel
- Driven Tunnel

**WESTCONNEX M4 EAST EIS  
SURFACE WATER: FLOODING AND DRAINAGE**

Figure D24

IMPACT OF M4 EAST POST-CONSTRUCTION ON FLOOD BEHAVIOUR  
CINTRA PARK FRESH AIR SUPPLY AND WATER TREATMENT FACILITY  
200 YEAR ARI



Scale: 1:3,000

30 0 30 60 90 m

**LEGEND**

TUFLOW Model Extent	Project Boundary	Existing Drainage Network
Road Design Strings	Bridge	Existing Drainage Network to be Demolished
Water Surface Elevation Contours (m AHD)	Tunnel Dive Structure	Proposed Drainage Network
XD09 Location of Existing Cross Drainage Structures along M4 Motorway/Parramatta Road	Cut and Cover Tunnel	
	Driven Tunnel	

**WESTCONNEX M4 EAST EIS**

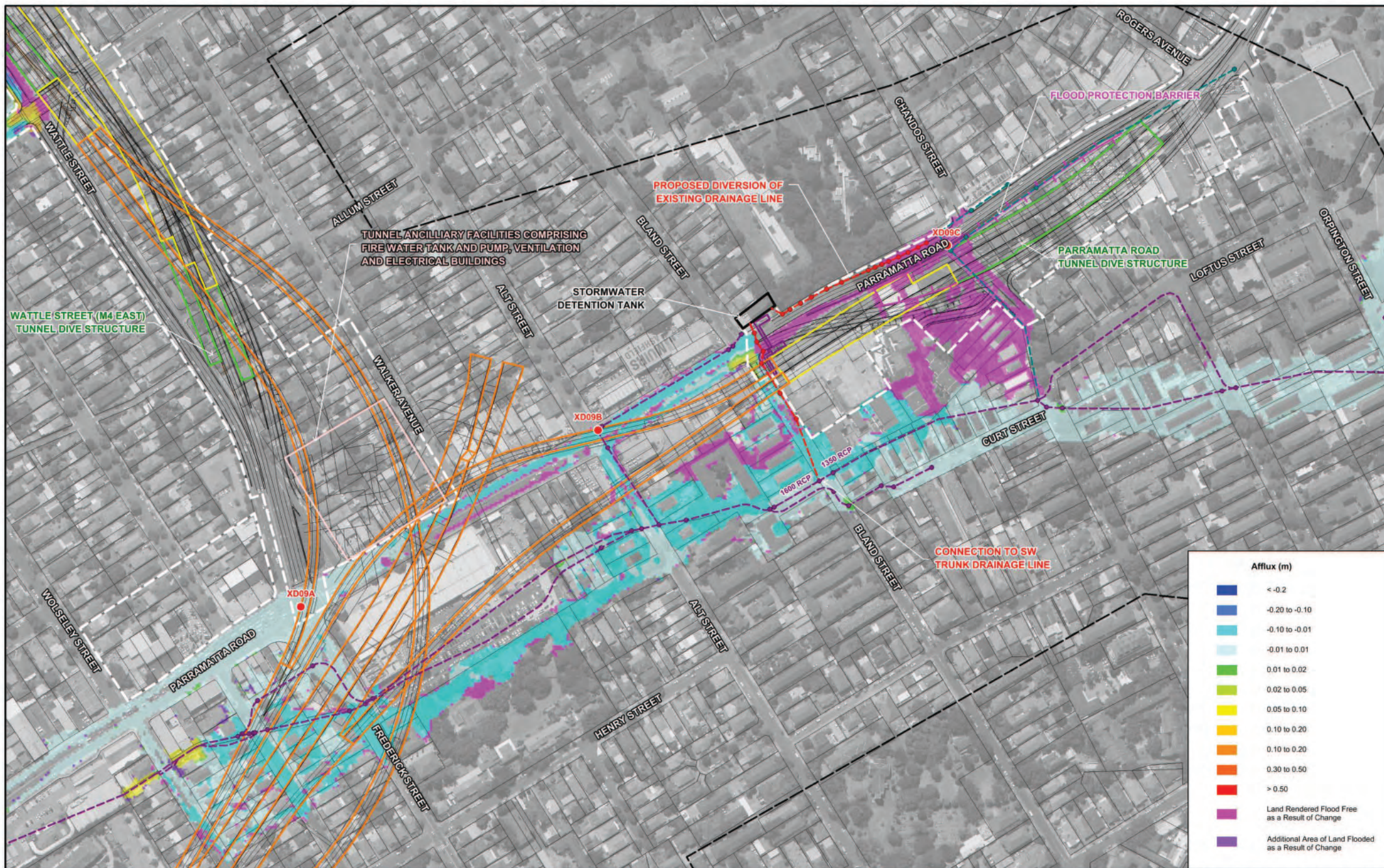
**SURFACE WATER: FLOODING AND DRAINAGE**

Figure D25

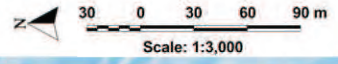
POST-CONSTRUCTION FLOODING PATTERNS

PARRAMATTA ROAD INTERCHANGE

5 YEAR ARI



Afflux (m)	
Dark Blue	<math><-0.2</math>
Blue	-0.20 to -0.10
Light Blue	-0.10 to -0.01
Very Light Blue	-0.01 to 0.01
Light Green	0.01 to 0.02
Yellow-Green	0.02 to 0.05
Yellow	0.05 to 0.10
Orange	0.10 to 0.20
Dark Orange	0.30 to 0.50
Red	> 0.50
Pink	Land Rendered Flood Free as a Result of Change
Purple	Additional Area of Land Flooded as a Result of Change



**LEGEND**

- TUFLOW Model Extent
- Road Design Strings
- XD09 Location of Existing Cross Drainage Structures along M4 Motorway/Parramatta Road
- Project Boundary
- Bridge
- Tunnel Dive Structure
- Cut and Cover Tunnel
- Driven Tunnel
- Existing Drainage Network
- Existing Drainage Network to be Demolished
- Proposed Drainage Network

**WESTCONNEX M4 EAST EIS  
SURFACE WATER: FLOODING AND DRAINAGE**

Figure D26

IMPACT OF M4 EAST POST-CONSTRUCTION ON FLOOD BEHAVIOUR  
PARRAMATTA ROAD INTERCHANGE  
5 YEAR ARI