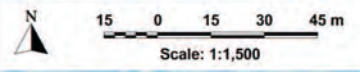











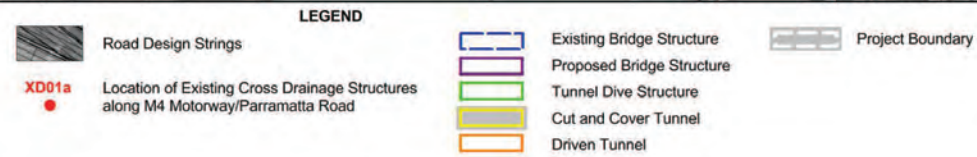
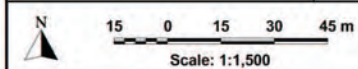
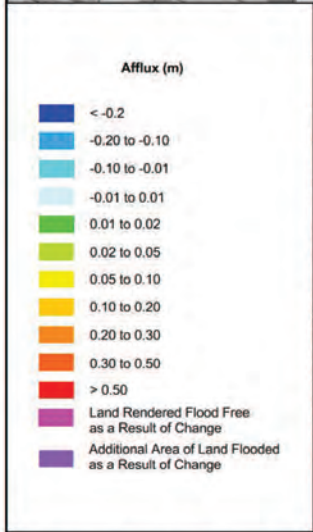
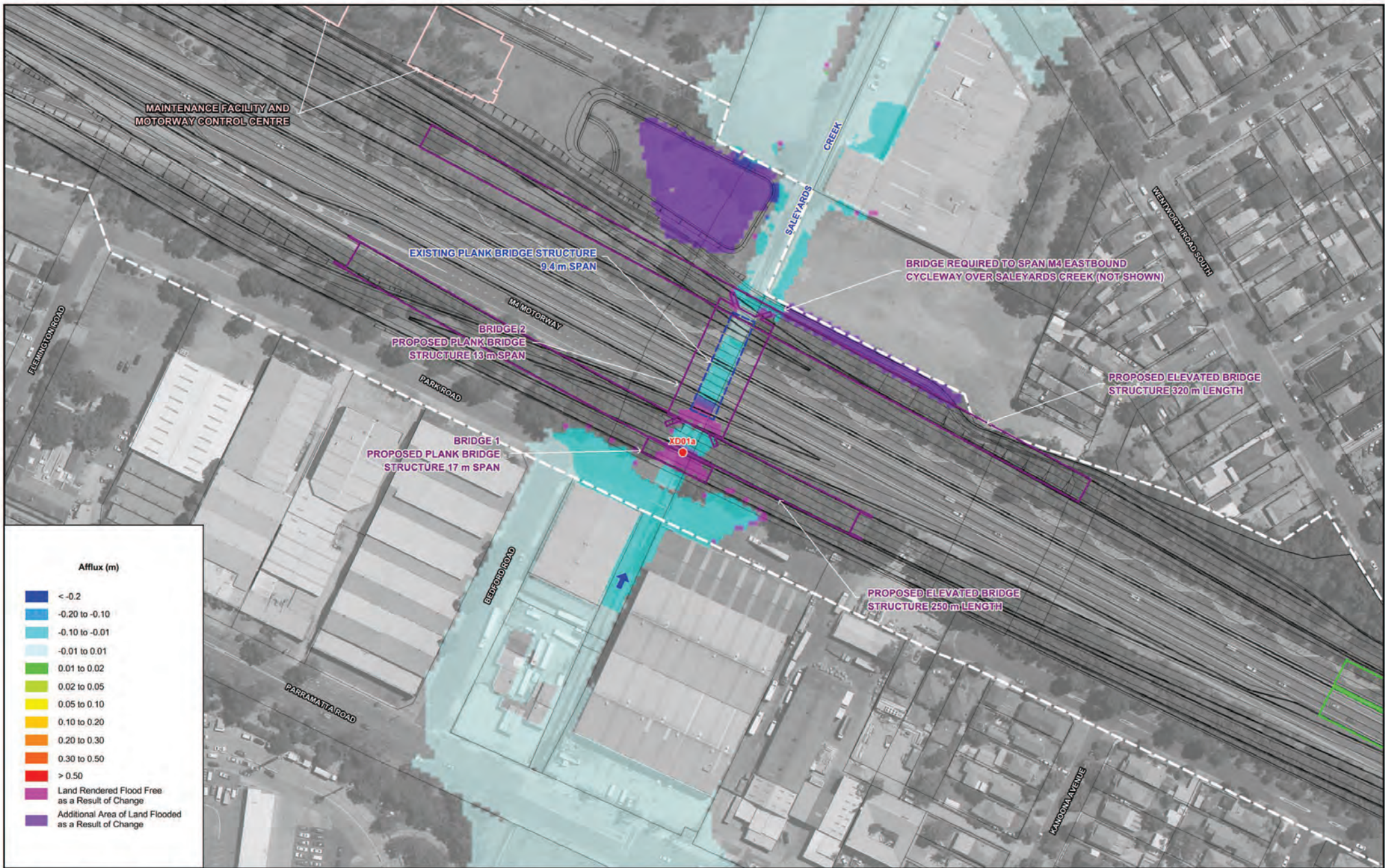
Indicative Depth of Inundation (m)

- < 0.05
- 0.05 to 0.10
- 0.10 to 0.20
- 0.20 to 0.30
- 0.30 to 0.40
- 0.40 to 0.50
- 0.50 to 0.60
- 0.60 to 0.70
- 0.70 to 0.80
- 0.80 to 0.90
- 0.90 to 1.00
- > 1.00
- Flow Direction Arrow



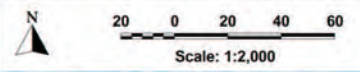
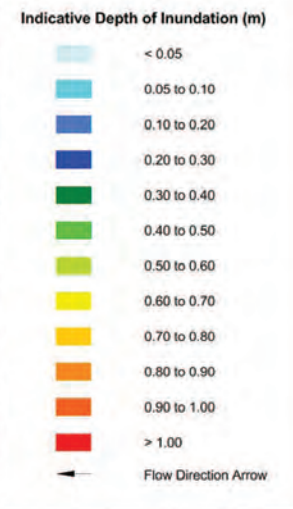
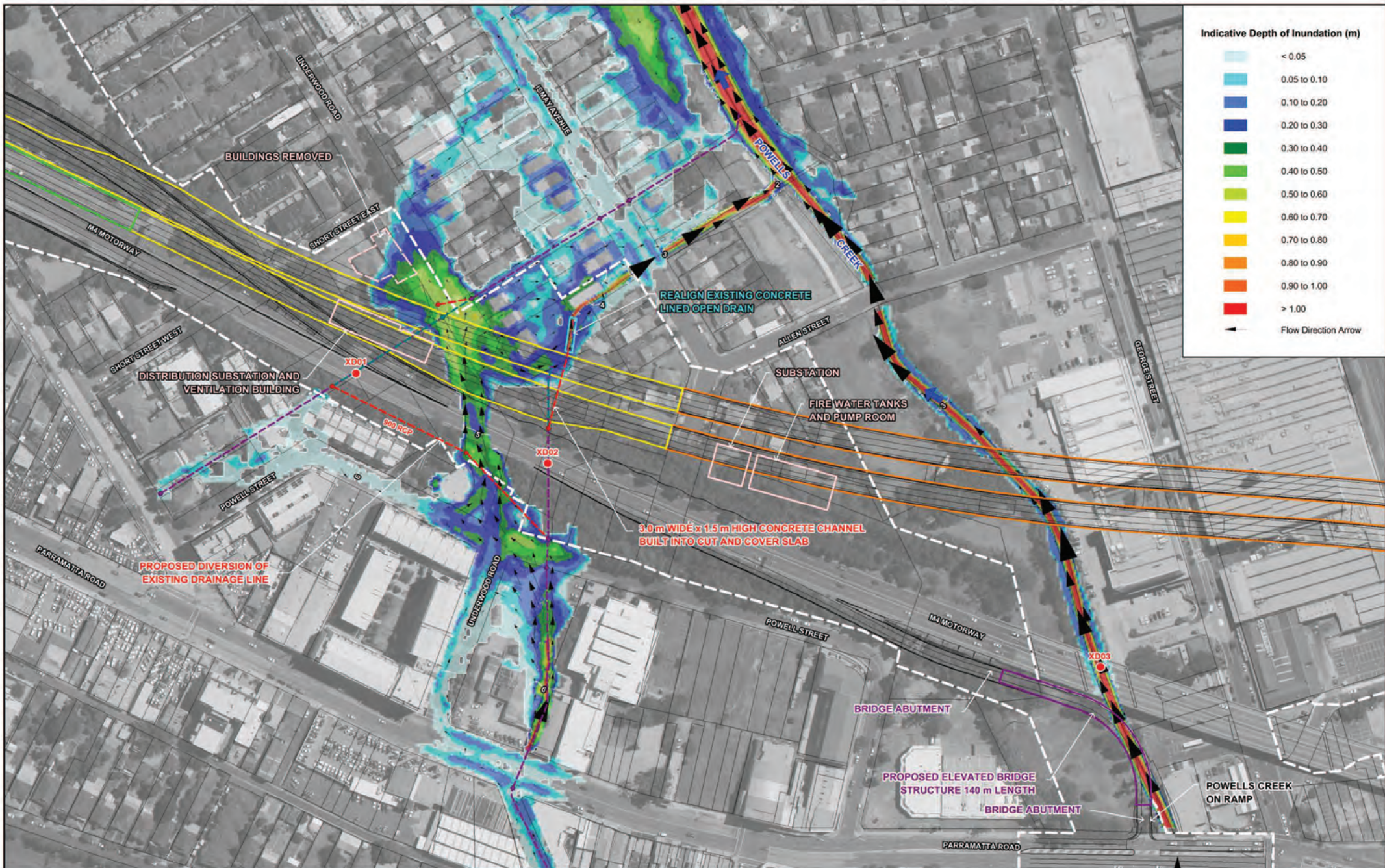
- LEGEND**
- | | | | | | |
|---|--|--|---------------------------|---|-----------------------|
|  | Road Design Strings |  | Existing Bridge Structure |  | Project Boundary |
|  | Water Surface Elevation Contours (m AHD) |  | Proposed Bridge Structure |  | Tunnel Dive Structure |
|  | Location of Existing Cross Drainage Structures along M4 Motorway/Parramatta Road |  | Cut and Cover Tunnel |  | Driven Tunnel |

WESTCONNEX M4 EAST EIS
SURFACE WATER: FLOODING AND DRAINAGE
 Figure D5
 POST-CONSTRUCTION FLOODING PATTERNS
 M4 MOTORWAY (SALEYARDS CREEK)
 200 YEAR ARI



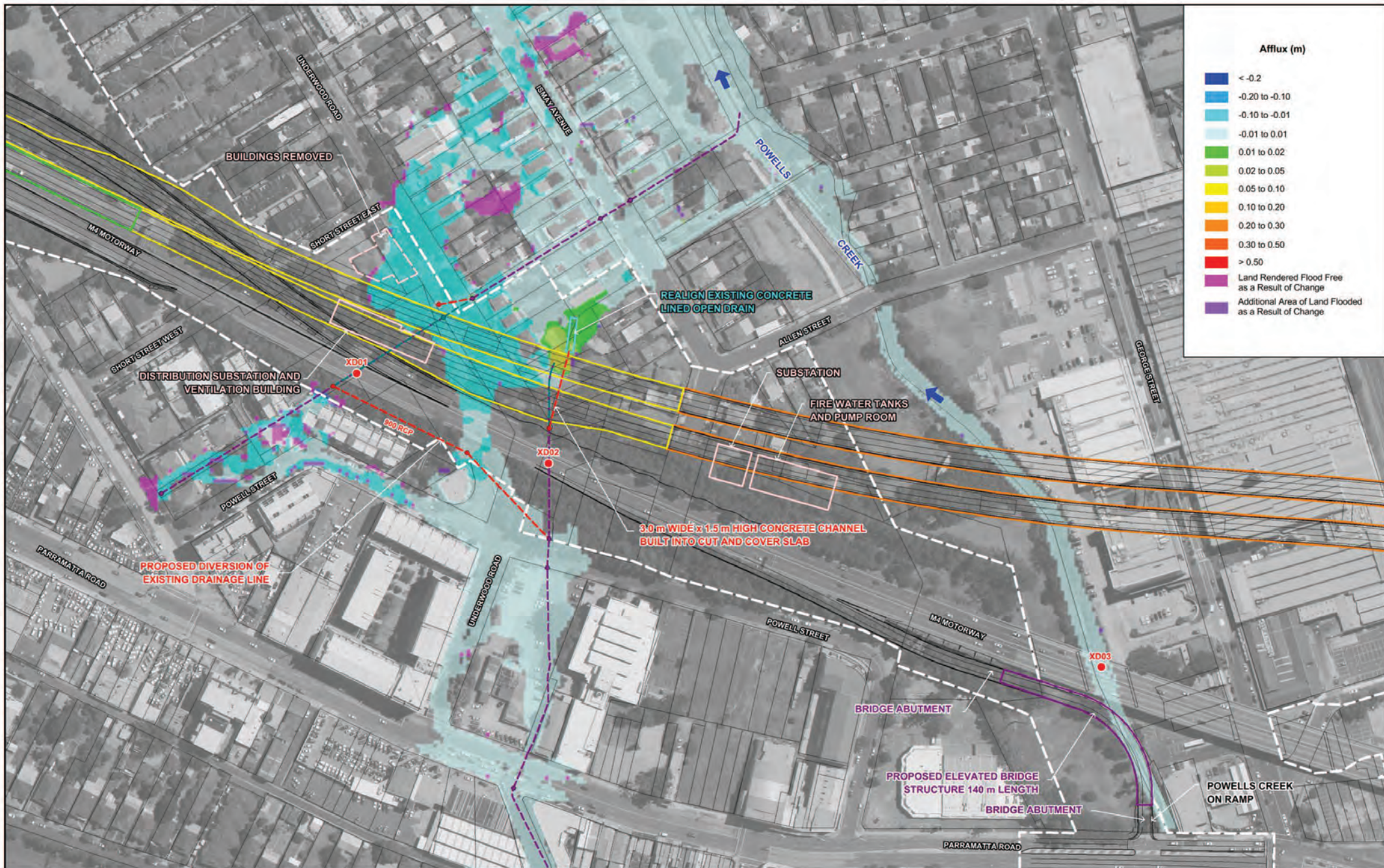
WESTCONNEX M4 EAST EIS
SURFACE WATER: FLOODING AND DRAINAGE

Figure D6
 IMPACT OF M4 EAST POST-CONSTRUCTION ON FLOOD BEHAVIOUR
 M4 MOTORWAY (SALEYARDS CREEK)
 200 YEAR ARI



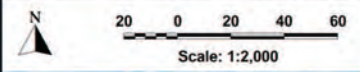
| LEGEND | | | |
|--------|--|--|--|
| | Road Design Strings | | Project Boundary |
| | Water Surface Elevation Contours (m AHD) | | Bridge |
| | Location of Existing Cross Drainage Structures along M4 Motorway/Parramatta Road | | Tunnel Dive Structure |
| | | | Cut and Cover Tunnel |
| | | | Driven Tunnel |
| | | | Existing Drainage Network |
| | | | Existing Drainage Network to be Demolished |
| | | | Proposed Drainage Network |

WESTCONNEX M4 EAST EIS
SURFACE WATER: FLOODING AND DRAINAGE
 Figure D7
 POST-CONSTRUCTION FLOODING PATTERNS
 HOMEBUSH BAY DRIVE INTERCHANGE
 5 YEAR ARI



Afflux (m)

| | |
|-----------------|---|
| Dark Blue | < -0.2 |
| Blue | -0.20 to -0.10 |
| Light Blue | -0.10 to -0.01 |
| Very Light Blue | -0.01 to 0.01 |
| Light Green | 0.01 to 0.02 |
| Yellow-Green | 0.02 to 0.05 |
| Yellow | 0.05 to 0.10 |
| Orange | 0.10 to 0.20 |
| Dark Orange | 0.20 to 0.30 |
| Red-Orange | 0.30 to 0.50 |
| Red | > 0.50 |
| Purple | Land Rendered Flood Free as a Result of Change |
| Light Purple | Additional Area of Land Flooded as a Result of Change |



LEGEND

Road Design Strings

Location of Existing Cross Drainage Structures along M4 Motorway/Parramatta Road

Project Boundary

Bridge

Tunnel Dive Structure

Cut and Cover Tunnel

Driven Tunnel

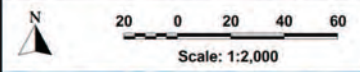
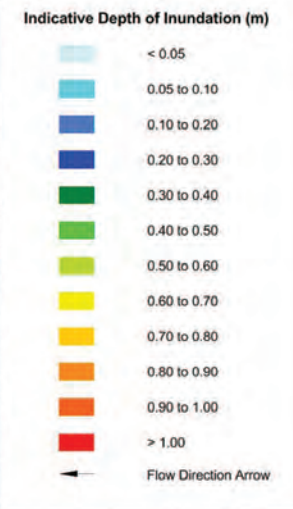
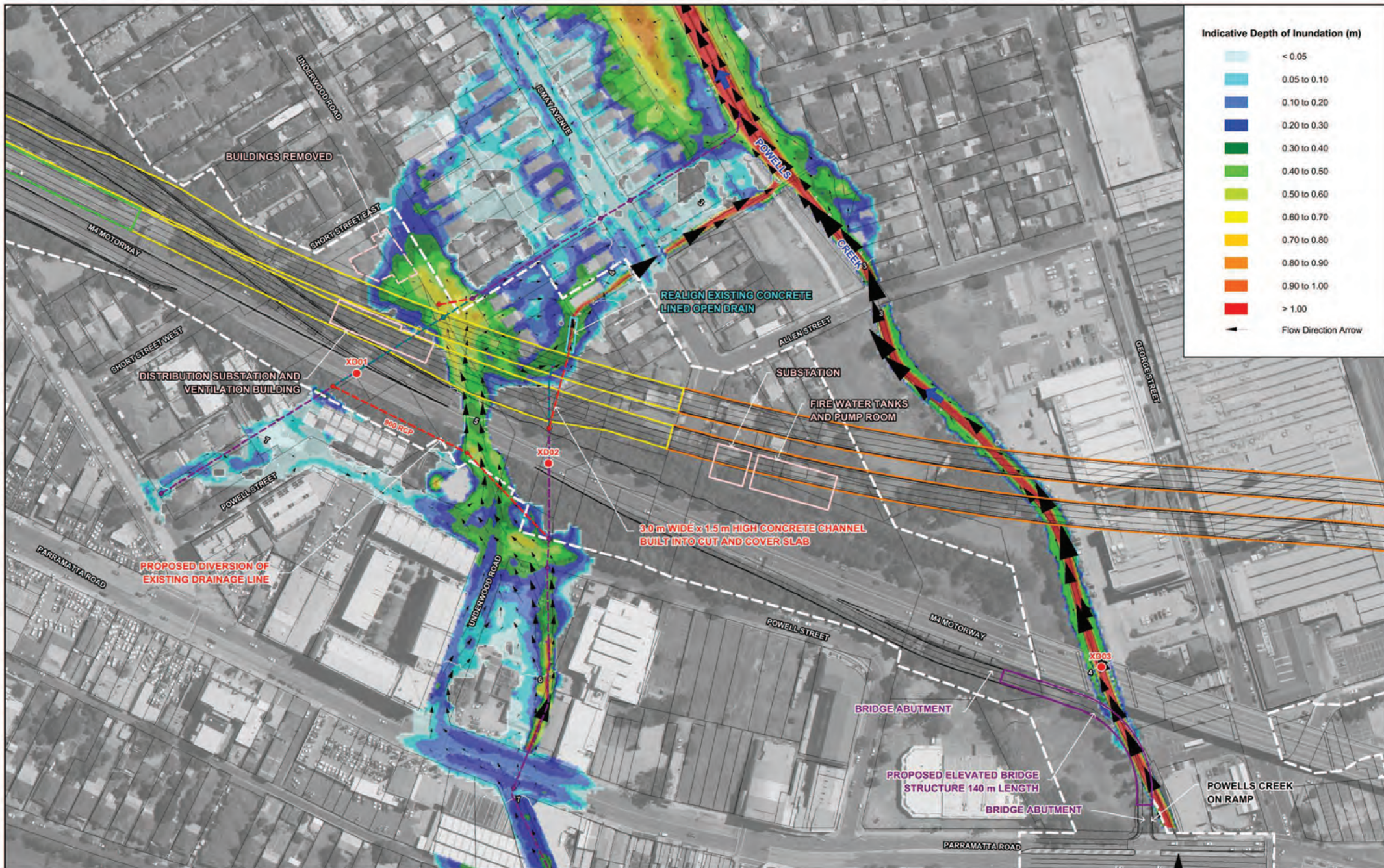
Existing Drainage Network

Existing Drainage Network to be Demolished

Proposed Drainage Network

**WESTCONNEX M4 EAST EIS
SURFACE WATER: FLOODING AND DRAINAGE**

Figure D8
IMPACT OF M4 EAST POST-CONSTRUCTION ON FLOOD BEHAVIOUR
HOMEBUSH BAY DRIVE INTERCHANGE
5 YEAR ARI

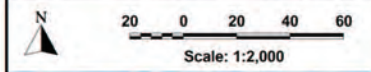
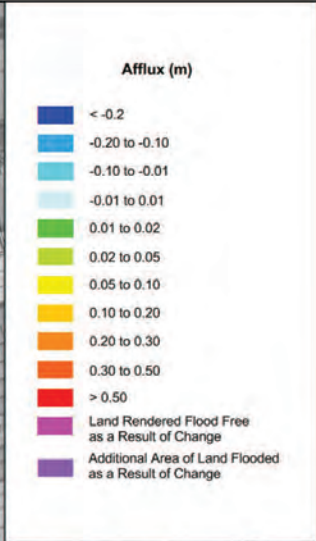
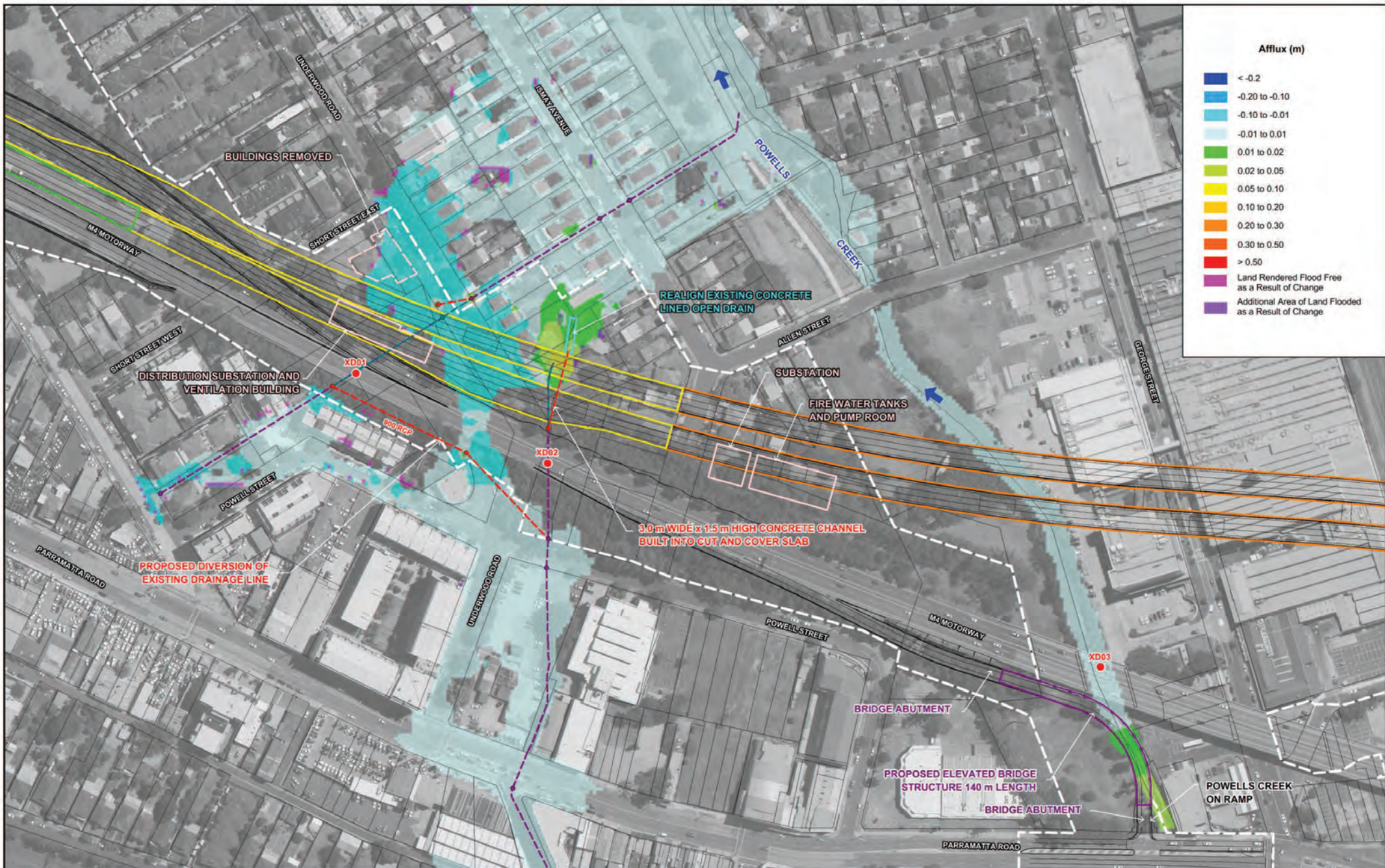


Lyal & Associates

LEGEND

| | | | | | |
|--|--|--|-------------------------|--|--|
| | Road Design Strings | | Project Boundary | | Existing Drainage Network |
| | Bridge | | Bridge to be Demolished | | Existing Drainage Network to be Demolished |
| | Water Surface Elevation Contours (m AHD) | | Tunnel Dive Structure | | Proposed Drainage Network |
| | Location of Existing Cross Drainage Structures along M4 Motorway/Parramatta Road | | Cut and Cover Tunnel | | |
| | | | Driven Tunnel | | |

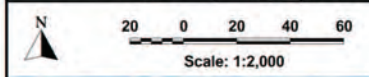
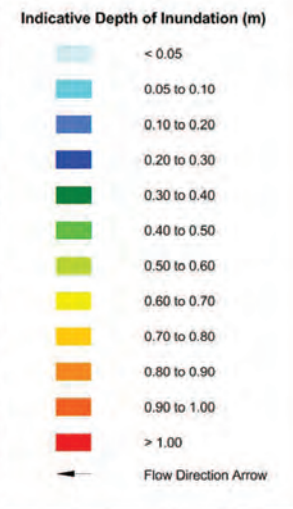
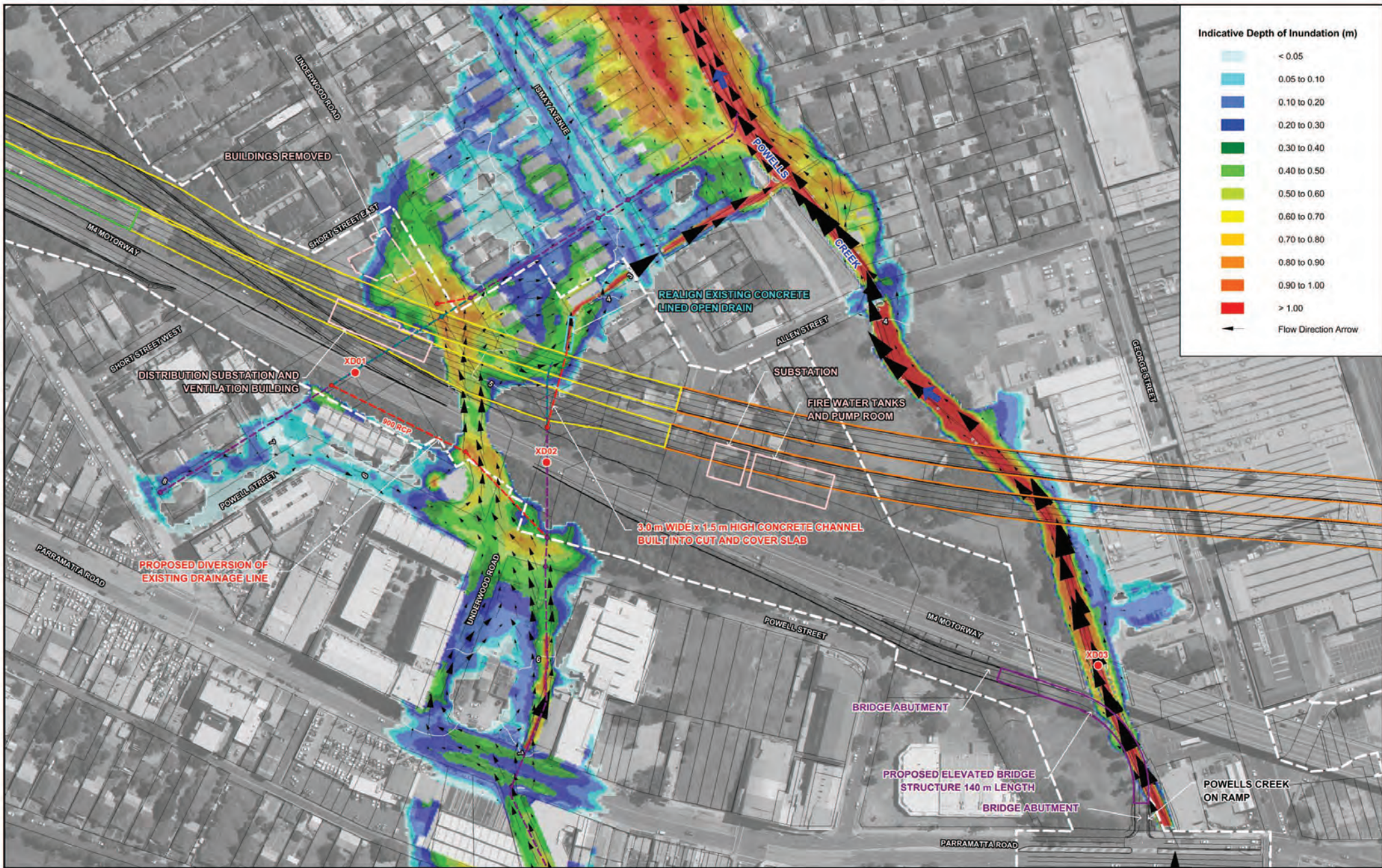
WESTCONNEX M4 EAST EIS
SURFACE WATER: FLOODING AND DRAINAGE
 Figure D9
 POST-CONSTRUCTION FLOODING PATTERNS
 HOMEBUSH BAY DRIVE INTERCHANGE
 20 YEAR ARI



- LEGEND**
- Road Design Strings
 - XD01** Location of Existing Cross Drainage Structures along M4 Motorway/Parramatta Road
 - Project Boundary
 - Bridge
 - Tunnel Dive Structure
 - Cut and Cover Tunnel
 - Driven Tunnel
 - Existing Drainage Network
 - Existing Drainage Network to be Demolished
 - Proposed Drainage Network

- 3.0 m WIDE x 1.5 m HIGH CONCRETE CHANNEL BUILT INTO CUT AND COVER SLAB
- REALIGN EXISTING CONCRETE LINED OPEN DRAIN
- DISTRIBUTION SUBSTATION AND VENTILATION BUILDING
- SUBSTATION
- FIRE WATER TANKS AND PUMP ROOM
- BRIDGE ABUTMENT
- PROPOSED ELEVATED BRIDGE STRUCTURE 140 m LENGTH
- BRIDGE ABUTMENT
- POWELLS CREEK ON RAMP

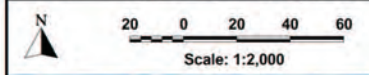
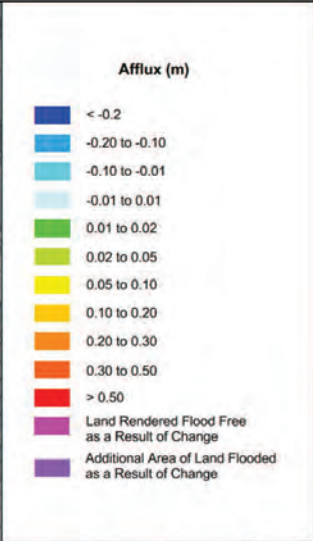
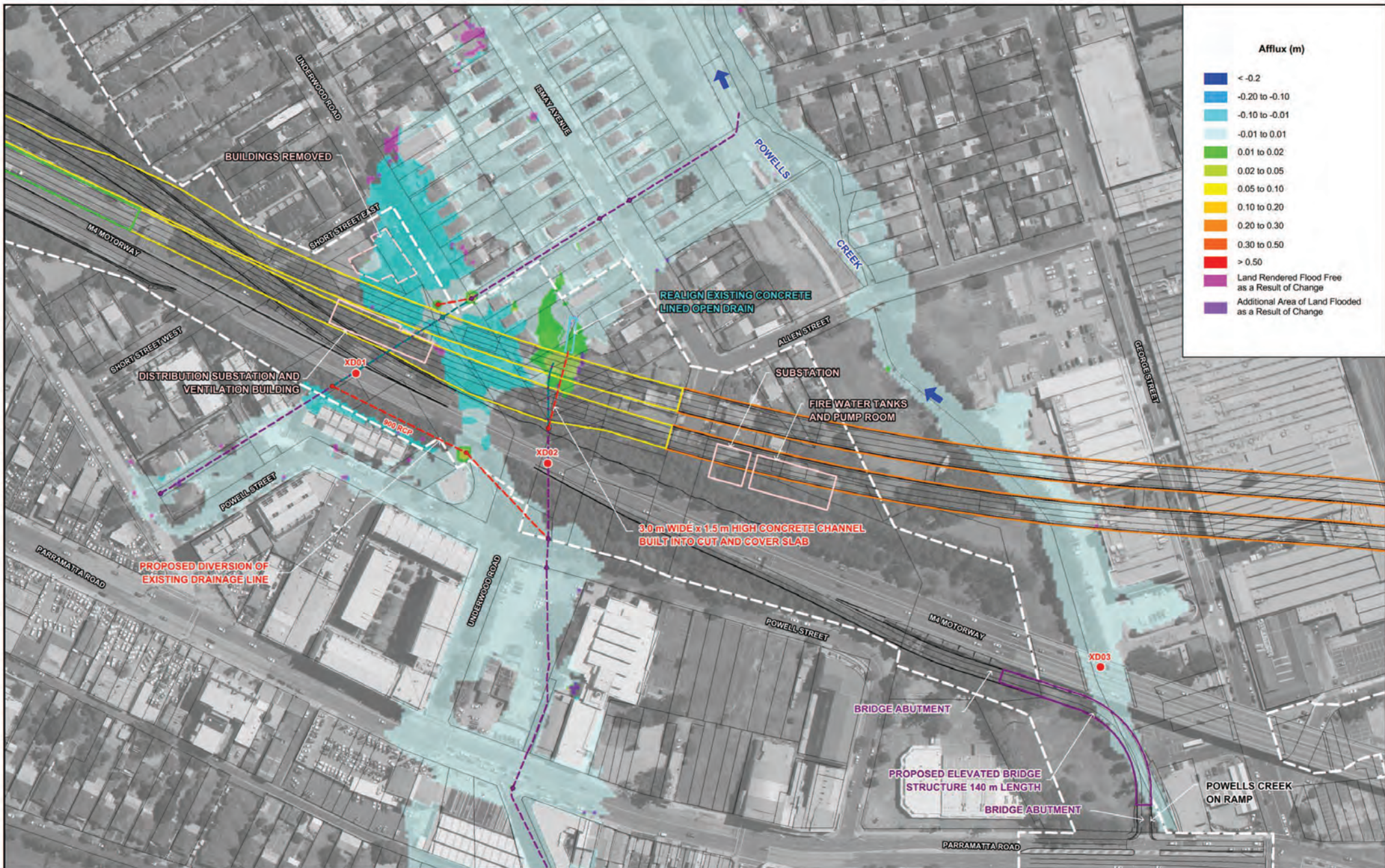
WESTCONNEX M4 EAST EIS
SURFACE WATER: FLOODING AND DRAINAGE
 Figure D10
 IMPACT OF M4 EAST POST-CONSTRUCTION ON FLOOD BEHAVIOUR
 HOMEBUSH BAY DRIVE INTERCHANGE
 20 YEAR ARI



LEGEND

| | | | | | |
|--|--|--|-----------------------|--|--|
| | Road Design Strings | | Project Boundary | | Existing Drainage Network |
| | Bridge | | Tunnel Dive Structure | | Existing Drainage Network to be Demolished |
| | Water Surface Elevation Contours (m AHD) | | Cut and Cover Tunnel | | Proposed Drainage Network |
| | Location of Existing Cross Drainage Structures along M4 Motorway/Parramatta Road | | Driven Tunnel | | |

WESTCONNEX M4 EAST EIS
SURFACE WATER: FLOODING AND DRAINAGE
 Figure D11
 POST-CONSTRUCTION FLOODING PATTERNS
 HOMEBUSH BAY DRIVE INTERCHANGE
 200 YEAR ARI



LEGEND

Road Design Strings

Location of Existing Cross Drainage Structures along M4 Motorway/Parramatta Road

Project Boundary

Bridge

Tunnel Dive Structure

Cut and Cover Tunnel

Driven Tunnel

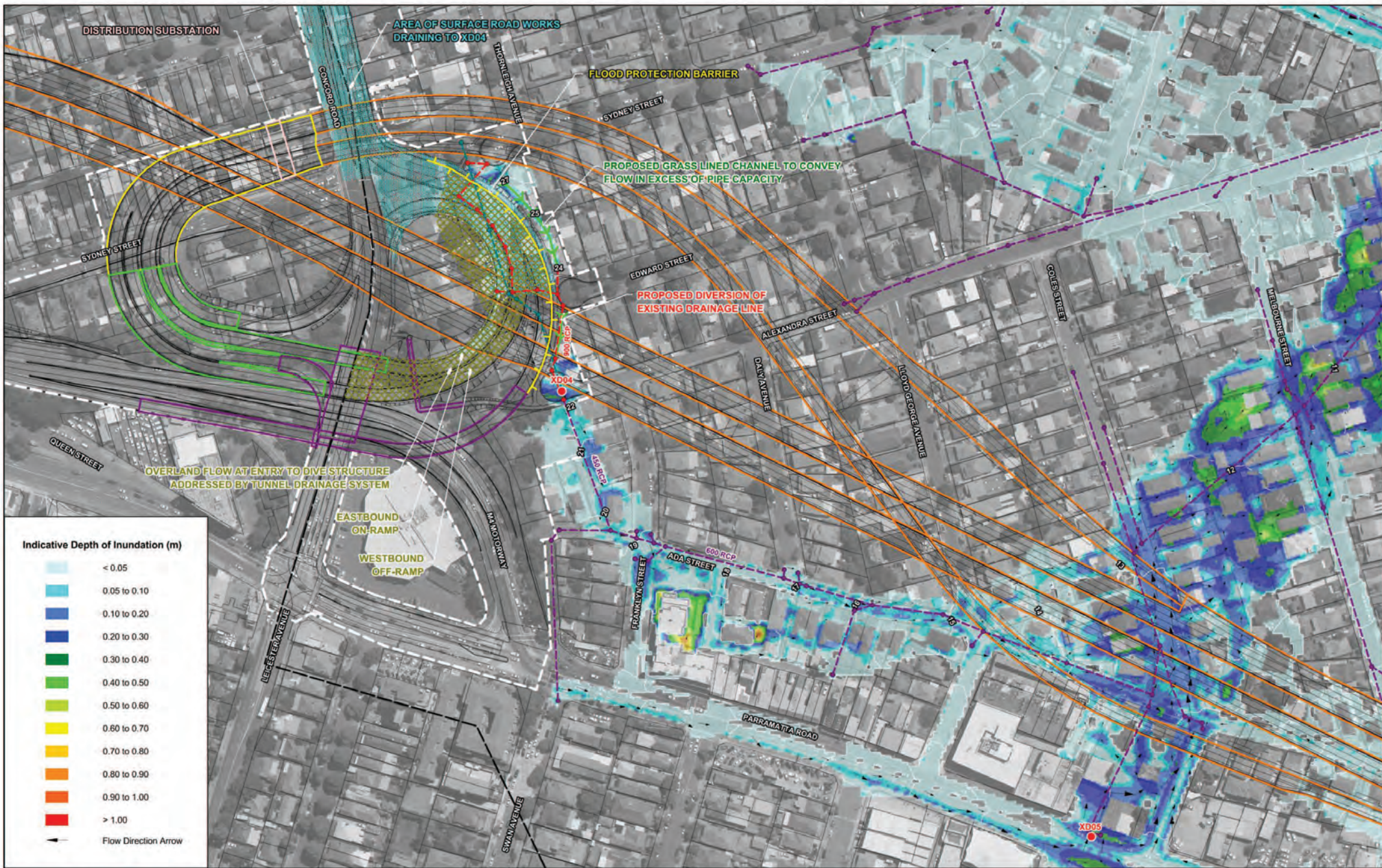
Existing Drainage Network

Existing Drainage Network to be Demolished

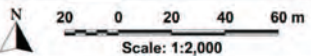
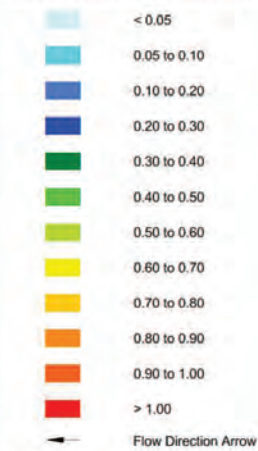
Proposed Drainage Network

WESTCONNEX M4 EAST EIS
SURFACE WATER: FLOODING AND DRAINAGE

Figure D12
 IMPACT OF M4 EAST POST-CONSTRUCTION ON FLOOD BEHAVIOUR
 HOMEBUSH BAY DRIVE INTERCHANGE
 200 YEAR ARI



Indicative Depth of Inundation (m)

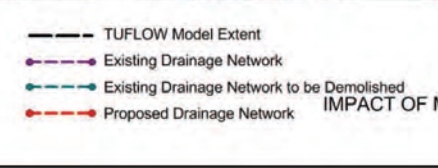
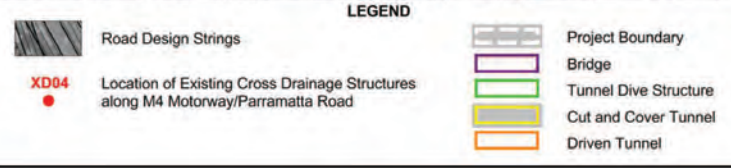
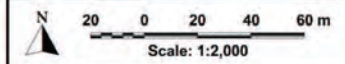
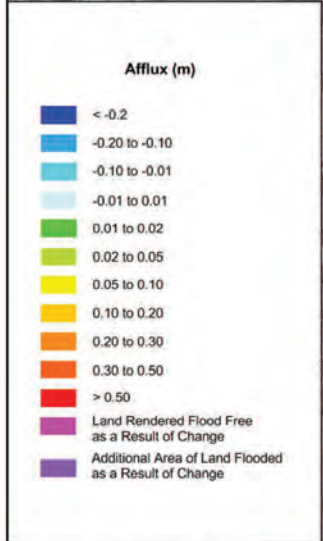
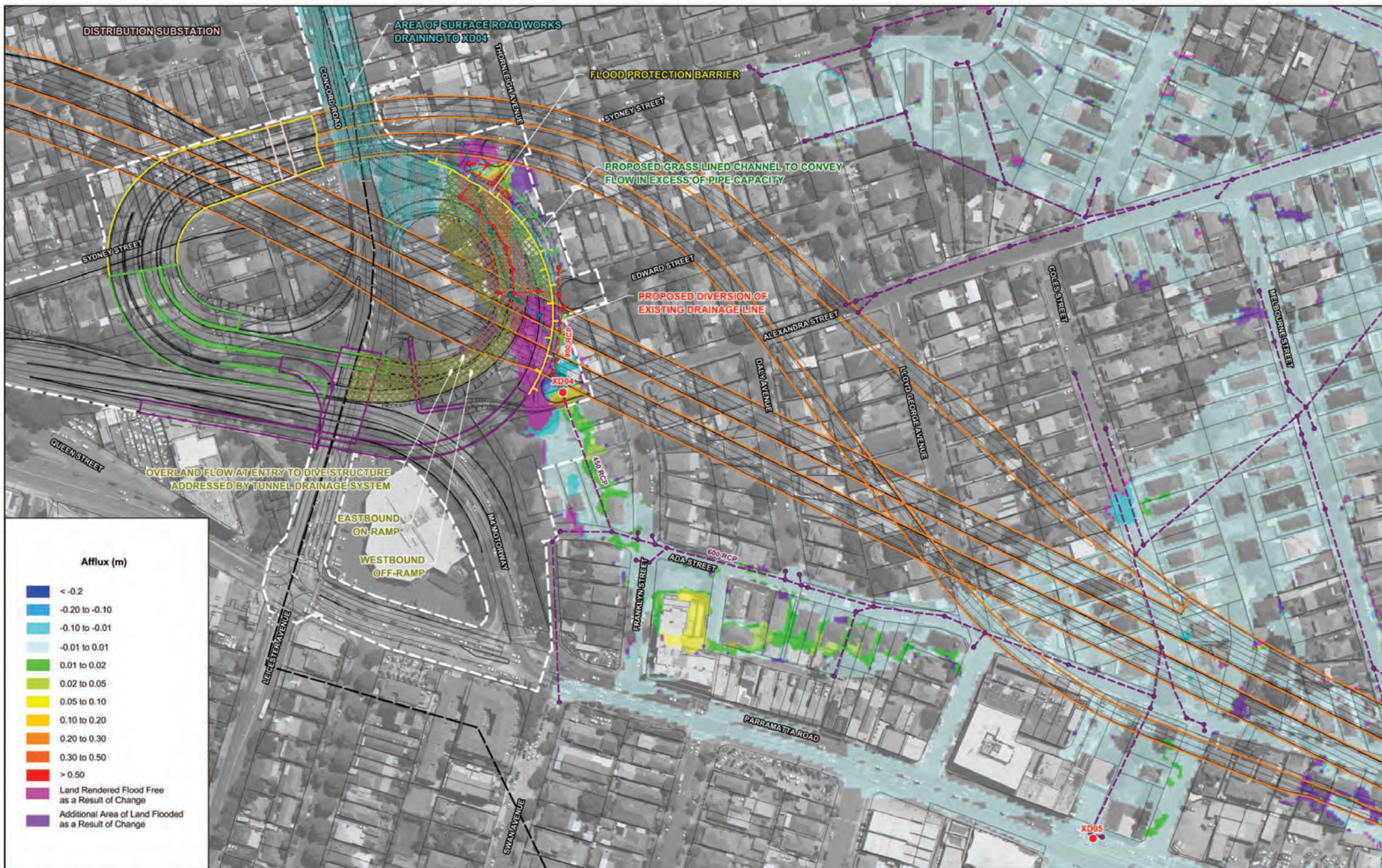


LEGEND

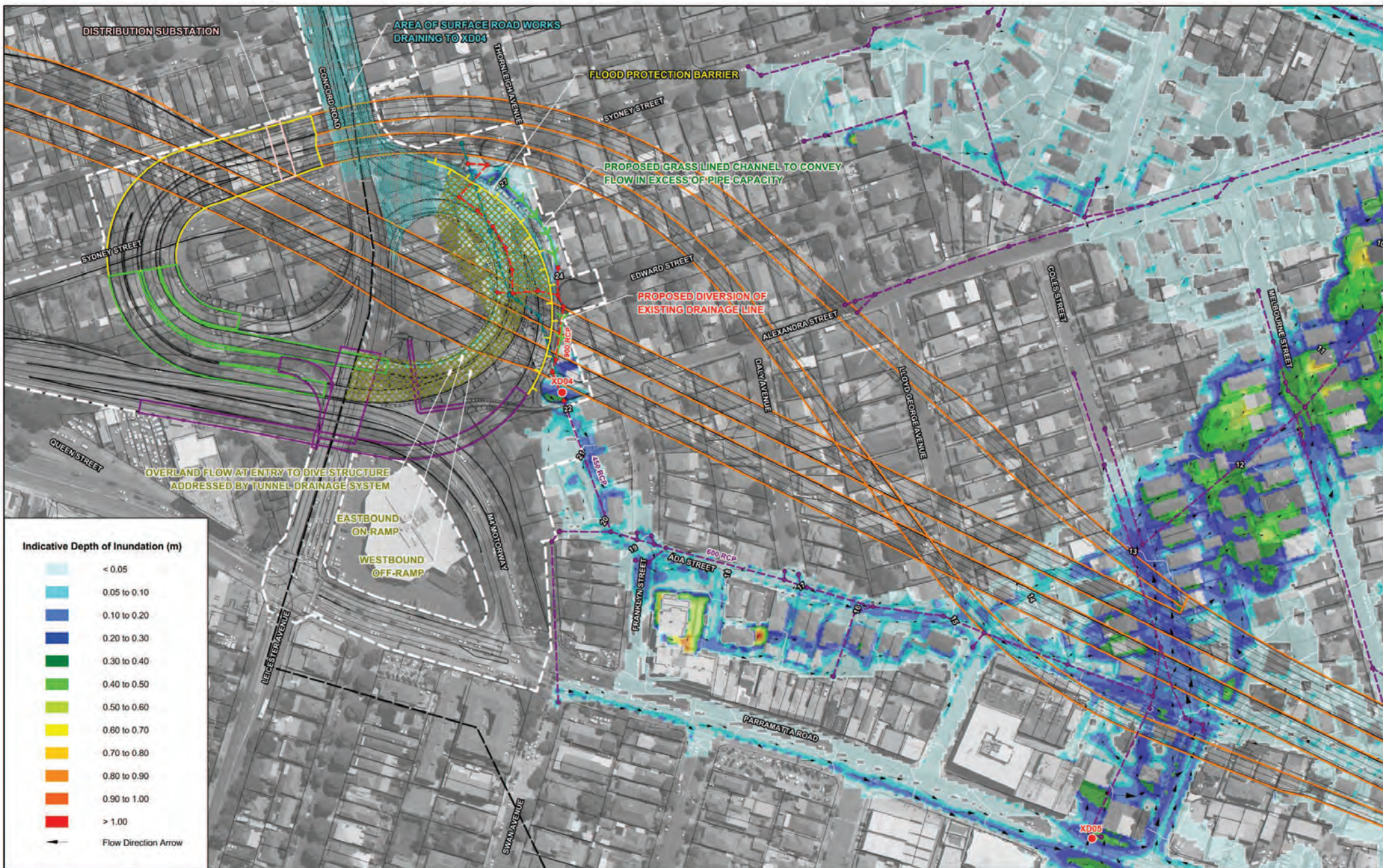
| | | | | | |
|--|--|--|-----------------------|--|--|
| | Road Design Strings | | Project Boundary | | TUFLOW Model Extent |
| | Water Surface Elevation Contours (m AHD) | | Bridge | | Existing Drainage Network |
| | Location of Existing Cross Drainage Structures along M4 Motorway/Parramatta Road | | Tunnel Dive Structure | | Existing Drainage Network to be Demolished |
| | | | Cut and Cover Tunnel | | Proposed Drainage Network |
| | | | Driven Tunnel | | |

**WESTCONNEX M4 EAST EIS
SURFACE WATER: FLOODING AND DRAINAGE**

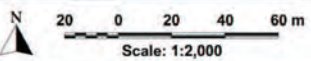
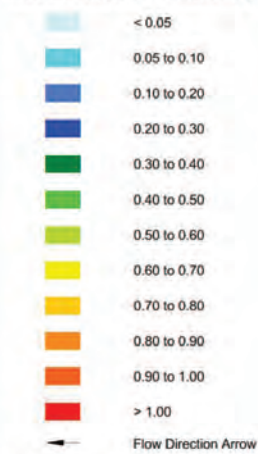
Figure D13
POST-CONSTRUCTION FLOODING PATTERNS
CONCORD ROAD INTERCHANGE
5 YEAR ARI



WESTCONNEX M4 EAST EIS
SURFACE WATER: FLOODING AND DRAINAGE
 Figure D14
 IMPACT OF M4 EAST POST-CONSTRUCTION ON FLOOD BEHAVIOUR
 CONCORD ROAD INTERCHANGE
 5 YEAR ARI

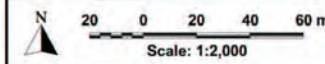
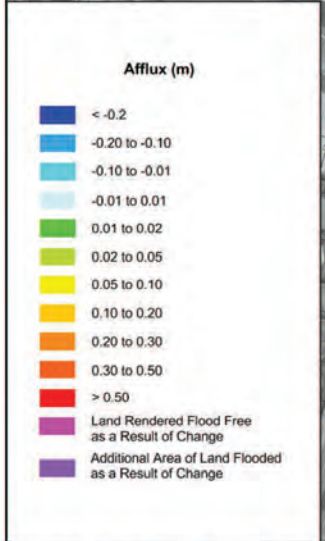
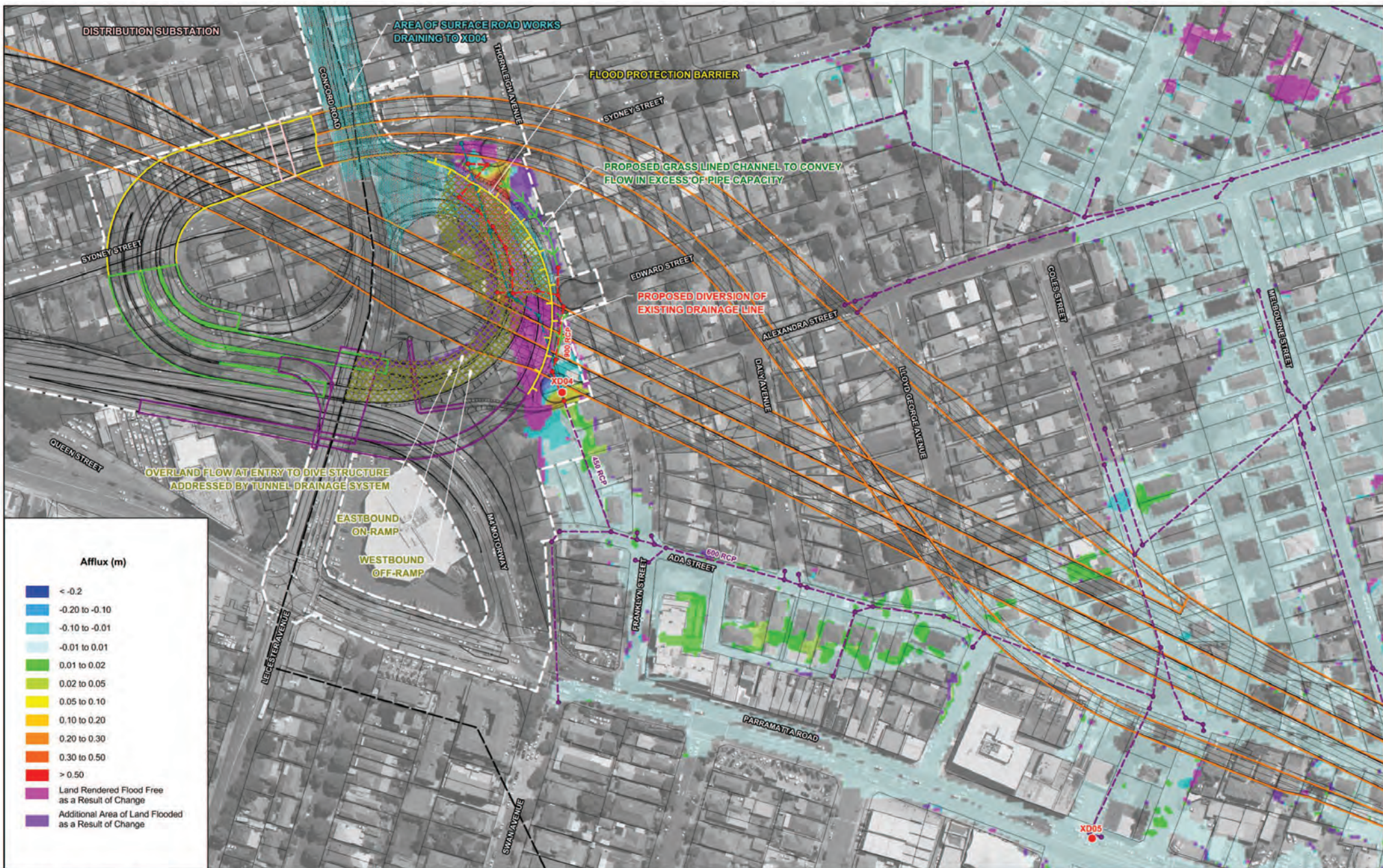


Indicative Depth of Inundation (m)



LEGEND

| | | | | | |
|--|--|--|-----------------------|--|--|
| | Road Design Strings | | Project Boundary | | TUFLOW Model Extent |
| | Water Surface Elevation Contours (m AHD) | | Bridge | | Existing Drainage Network |
| | Location of Existing Cross Drainage Structures along M4 Motorway/Parramatta Road | | Tunnel Dive Structure | | Existing Drainage Network to be Demolished |
| | | | Cut and Cover Tunnel | | Proposed Drainage Network |
| | | | Driven Tunnel | | |



LEGEND

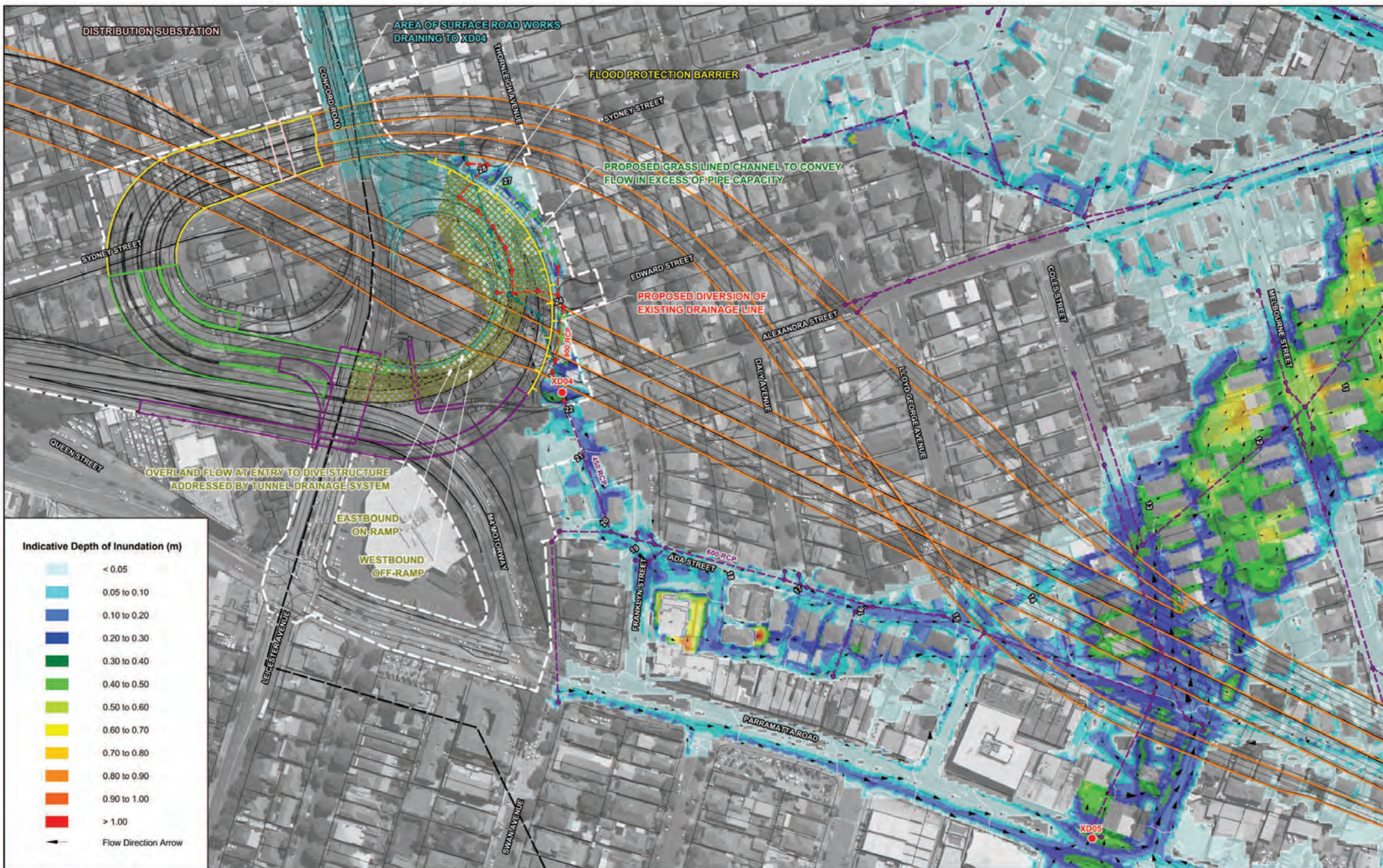
Road Design Strings
● XD04 Location of Existing Cross Drainage Structures along M4 Motorway/Parramatta Road

Project Boundary
 Bridge
 Tunnel Dive Structure
 Cut and Cover Tunnel
 Driven Tunnel

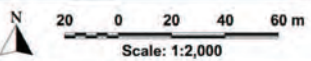
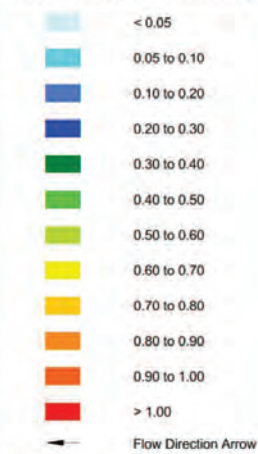
TUFLOW Model Extent
 Existing Drainage Network
 Existing Drainage Network to be Demolished
 Proposed Drainage Network

WESTCONNEX M4 EAST EIS
SURFACE WATER: FLOODING AND DRAINAGE

IMPACT OF M4 EAST POST-CONSTRUCTION ON FLOOD BEHAVIOUR
 CONCORD ROAD INTERCHANGE
 20 YEAR ARI



Indicative Depth of Inundation (m)



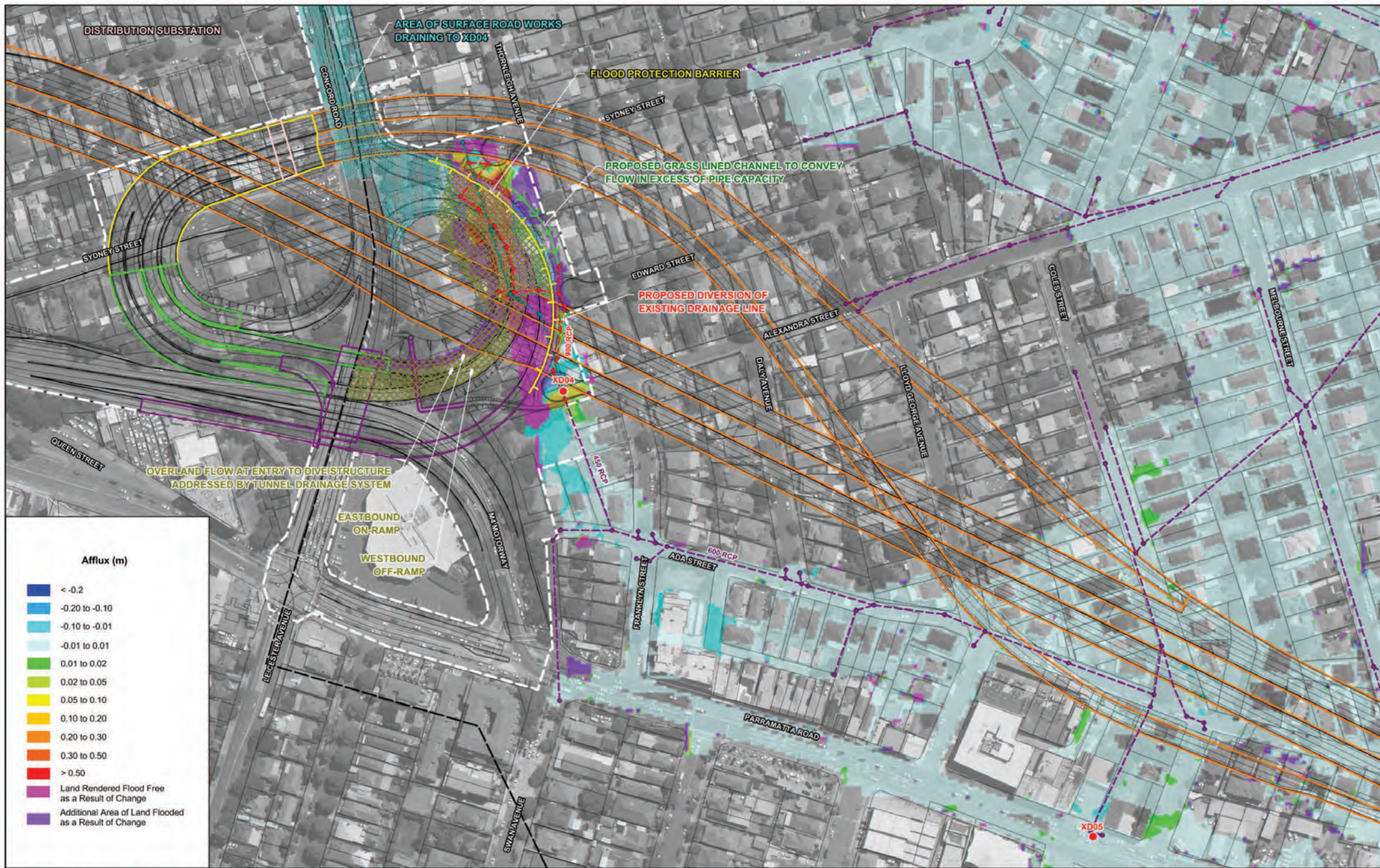
LEGEND

- | | | | | | |
|--|--|--|-----------------------|--|--|
| | Road Design Strings | | Project Boundary | | TUFLOW Model Extent |
| | Water Surface Elevation Contours (m AHD) | | Bridge | | Existing Drainage Network |
| | Location of Existing Cross Drainage Structures along M4 Motorway/Parramatta Road | | Tunnel Dive Structure | | Existing Drainage Network to be Demolished |
| | | | Cut and Cover Tunnel | | Proposed Drainage Network |
| | | | Driven Tunnel | | |

**WESTCONNEX M4 EAST EIS
SURFACE WATER: FLOODING AND DRAINAGE**

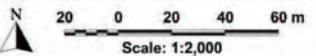
Figure D17

POST-CONSTRUCTION FLOODING PATTERNS
CONCORD ROAD INTERCHANGE
200 YEAR ARI



Afflux (m)

- <math>< -0.2</math>
- -0.20 to -0.10
- -0.10 to -0.01
- -0.01 to 0.01
- 0.01 to 0.02
- 0.02 to 0.05
- 0.05 to 0.10
- 0.10 to 0.20
- 0.20 to 0.30
- 0.30 to 0.50
- > 0.50
- Land Rendered Flood Free as a Result of Change
- Additional Area of Land Flooded as a Result of Change



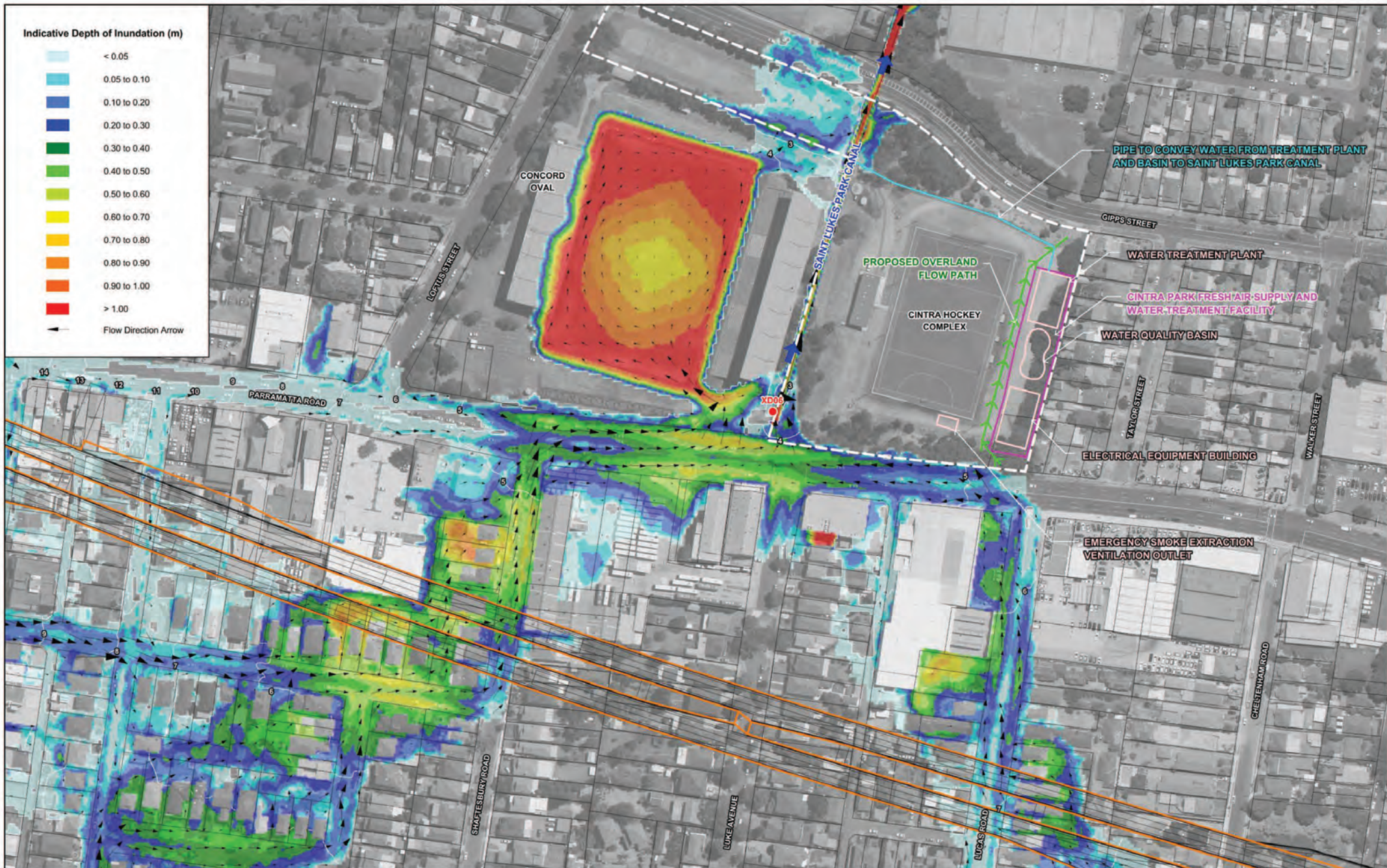
LEGEND

- Road Design Strings
- Project Boundary
- TUFLOW Model Extent
- XD04 Location of Existing Cross Drainage Structures along M4 Motorway/Parramatta Road
- Bridge
- Tunnel Dive Structure
- Cut and Cover Tunnel
- Driven Tunnel
- Existing Drainage Network
- Existing Drainage Network to be Demolished
- Proposed Drainage Network

**WESTCONNEX M4 EAST EIS
SURFACE WATER: FLOODING AND DRAINAGE**

Figure D18

IMPACT OF M4 EAST POST-CONSTRUCTION ON FLOOD BEHAVIOUR
CONCORD ROAD INTERCHANGE
200 YEAR ARI

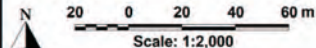


Indicative Depth of Inundation (m)

- < 0.05
 - 0.05 to 0.10
 - 0.10 to 0.20
 - 0.20 to 0.30
 - 0.30 to 0.40
 - 0.40 to 0.50
 - 0.50 to 0.60
 - 0.60 to 0.70
 - 0.70 to 0.80
 - 0.80 to 0.90
 - 0.90 to 1.00
 - > 1.00
- Flow Direction Arrow

LEGEND

- Road Design Strings
- Project Boundary
- Water Surface Elevation Contours (m AHD)
- Bridge
- Location of Existing Cross Drainage Structures along M4 Motorway/Parramatta Road
- Tunnel Dive Structure
- Cut and Cover Tunnel
- Driven Tunnel



**WESTCONNEX M4 EAST EIS
SURFACE WATER: FLOODING AND DRAINAGE**

Figure D19

POST-CONSTRUCTION FLOODING PATTERNS
CINTRA PARK FRESH AIR SUPPLY AND WATER TREATMENT FACILITY
5 YEAR ARI