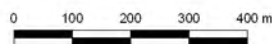


2 LINCOLN STREET
LANE COVE
NSW 2066
AUSTRALIA
T: +61 2 9427 8100
www.slrconsulting.com

Project No.:	510.13569
Date:	16/08/2015
Drawn by:	DS
Scale:	1:13,000
Sheet Size:	@ A4
Projection:	GDA 1994 MGA Zone 56



Construction Works	Acquired Buildings	Construction Hoarding
Worst-case Exceedance of NML		
< 10 dB	16 dB - 20 dB	> 25 dB
11 dB - 15 dB	21 dB - 25 dB	
Noise Contours (LAeq(15minute))		
40 dBA	60 dBA	80 dBA
50 dBA	70 dBA	

WestConnex Delivery Authority

WestConnex - M4 East

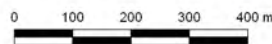
**Construction Noise Predictions
Tunnelling Sites
Daytime - No Mitigation**

The content contained within this document may be based on third party data. SLR Consulting Australia Pty Ltd does not guarantee the accuracy of such information.



2 LINCOLN STREET
LANE COVE
NSW 2066
AUSTRALIA
T: +61 2 9427 8100
www.slrconsulting.com

Project No.:	610.13569
Date:	16/08/2015
Drawn by:	DS
Scale:	1:13,000
Sheet Size:	@ A4
Projection:	GDA 1994 MGA Zone 56



Construction Works	Acquired Buildings	Construction Hoarding
Worst-case Exceedance of NML		
< 10 dB	16 dB - 20 dB	> 25 dB
11 dB - 15 dB	21 dB - 25 dB	
Noise Contours (LAeq(15minute))		
40 dBA	60 dBA	80 dBA
50 dBA	70 dBA	

WestConnex Delivery Authority

WestConnex - M4 East

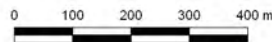
**Construction Noise Predictions
Tunnelling Sites
Daytime - No Mitigation**

The content contained within this document may be based on third party data. SLR Consulting Australia Pty Ltd does not guarantee the accuracy of such information.



2 LINCOLN STREET
LANE COVE
NSW 2066
AUSTRALIA
T: +61 2 9427 8100
www.slrconsulting.com

Project No.:	610.13569
Date:	16/08/2015
Drawn by:	DS
Scale:	1:13,000
Sheet Size:	@ A4
Projection:	GDA 1994 MGA Zone 56



WestConnex Delivery Authority

WestConnex - M4 East

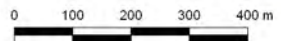
**Construction Noise Predictions
Tunnelling Sites
Night-time - No Mitigation**

The content contained within this document may be based on third party data. SLR Consulting Australia Pty Ltd does not guarantee the accuracy of such information.



2 LINCOLN STREET
LANE COVE
NSW 2066
AUSTRALIA
T: +61 2 9427 8100
www.slrconsulting.com

Project No.:	610.13569
Date:	16/08/2015
Drawn by:	DS
Scale:	1:13,000
Sheet Size:	@ A4
Projection:	GDA 1994 MGA Zone 56



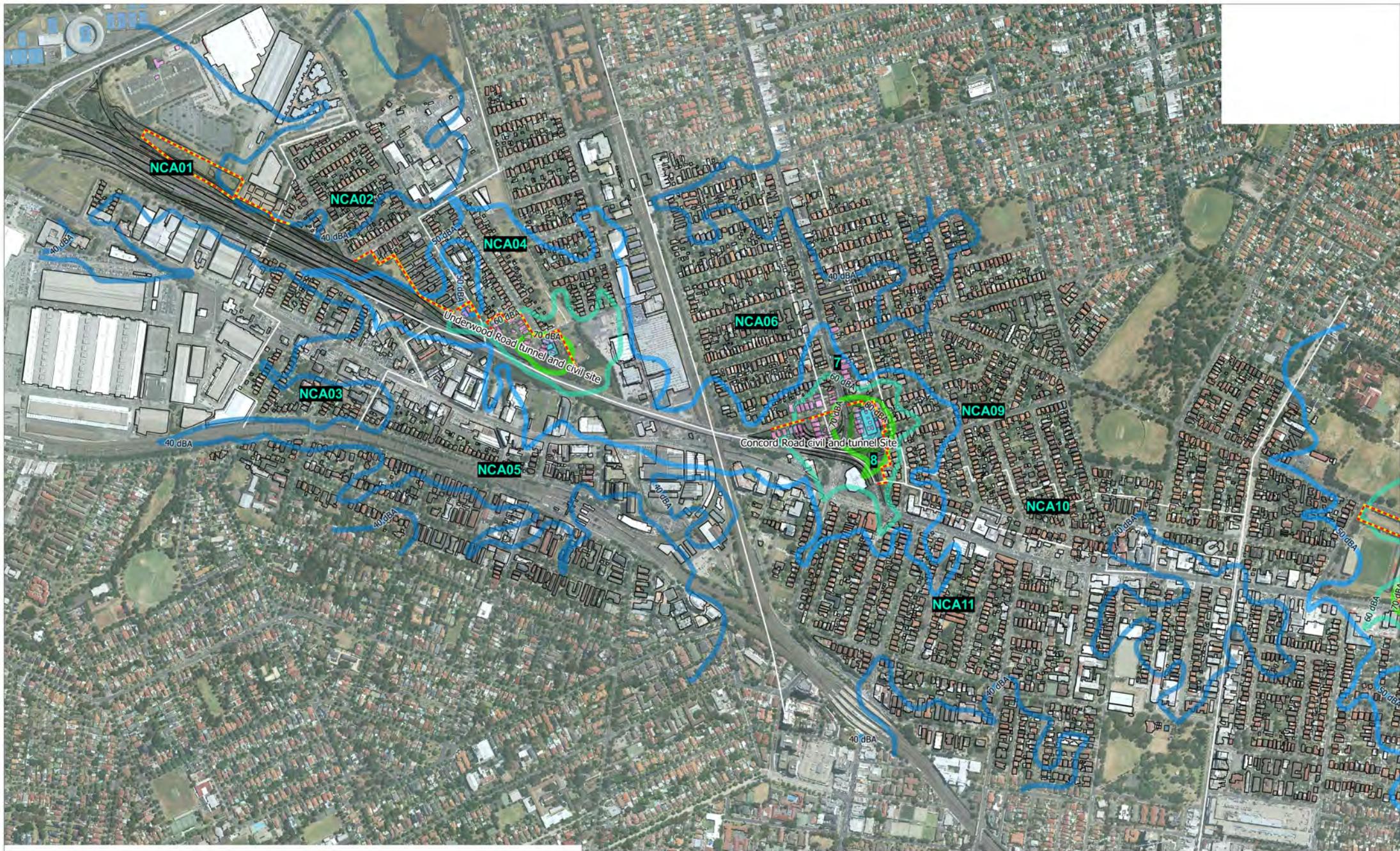
Construction Works	Acquired Buildings	Construction Hoarding
Worst-case Exceedance of NML		
< 10 dB	16 dB - 20 dB	> 25 dB
11 dB - 15 dB	21 dB - 25 dB	
Noise Contours (LAeq(15minute))		
40 dBA	60 dBA	80 dBA
50 dBA	70 dBA	

WestConnex Delivery Authority

WestConnex - M4 East

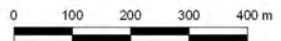
**Construction Noise Predictions
Tunnelling Sites
Night-time - No Mitigation**

The content contained within this document may be based on third party data. SLR Consulting Australia Pty Ltd does not guarantee the accuracy of such information.



2 LINCOLN STREET
LANE COVE
NSW 2066
AUSTRALIA
T: +61 2 9427 8100
www.slrconsulting.com

Project No.:	610.13569
Date:	16/08/2015
Drawn by:	DS
Scale:	1:13,000
Sheet Size:	@ A4
Projection:	GDA 1994 MGA Zone 56



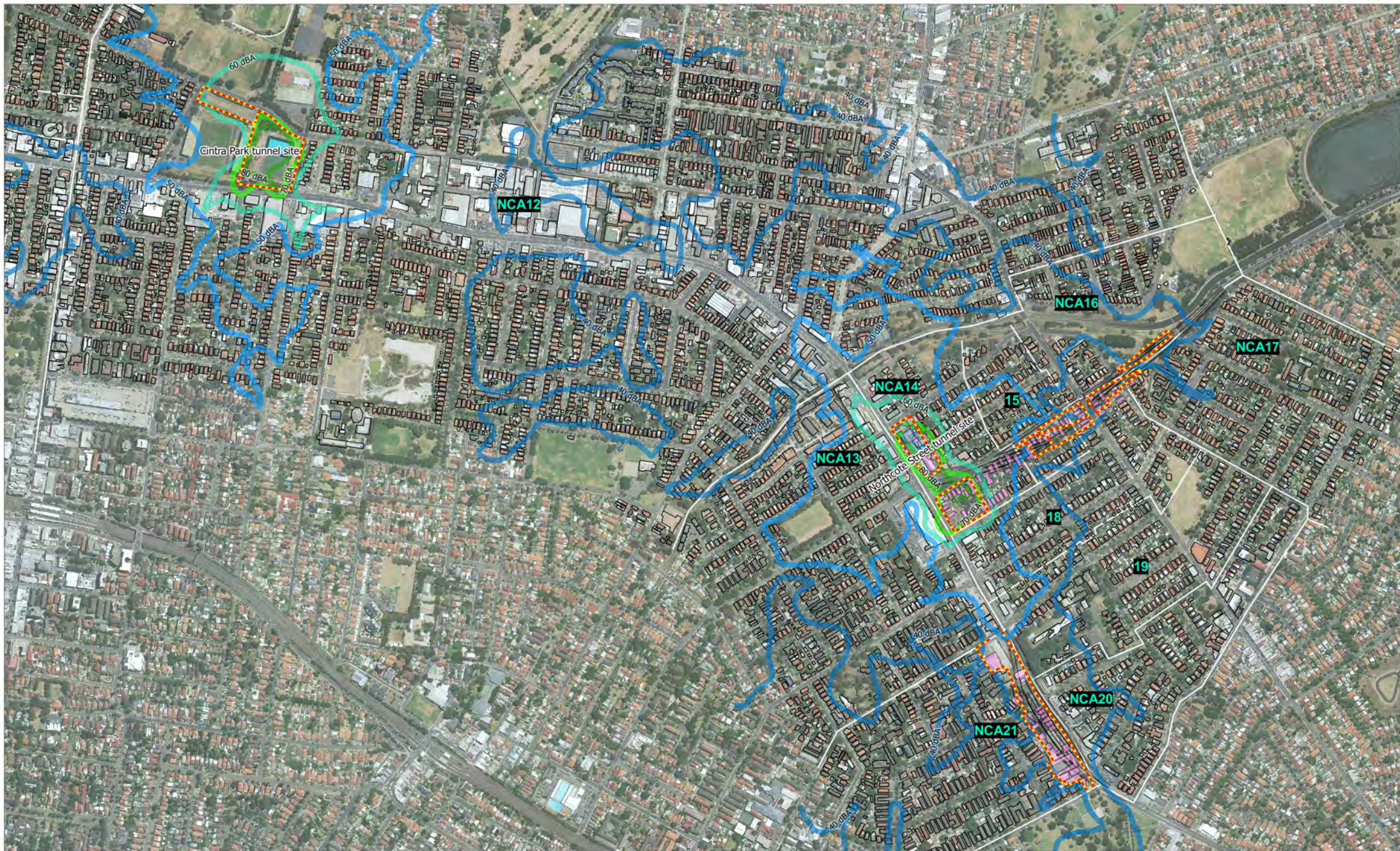
Construction Works	Acquired Buildings	Construction Hoarding
Worst-case Exceedance of NML		
< 10 dB	16 dB - 20 dB	> 25 dB
11 dB - 15 dB	21 dB - 25 dB	
Noise Contours (LAeq(15minute))		
40 dBA	60 dBA	80 dBA
50 dBA	70 dBA	

WestConnex Delivery Authority

WestConnex - M4 East

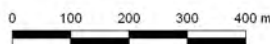
**Construction Noise Predictions
Tunnelling Sites
Daytime - With Mitigation**

The content contained within this document may be based on third party data. SLR Consulting Australia Pty Ltd does not guarantee the accuracy of such information.



2 LINCOLN STREET
LANE COVE
NSW 2066
AUSTRALIA
T: +61 2 9427 8100
www.slrconsulting.com

Project No.:	610.13569
Date:	16/08/2015
Drawn by:	DS
Scale:	1:13,000
Sheet Size:	@ A4
Projection:	GDA 1994 MGA Zone 56



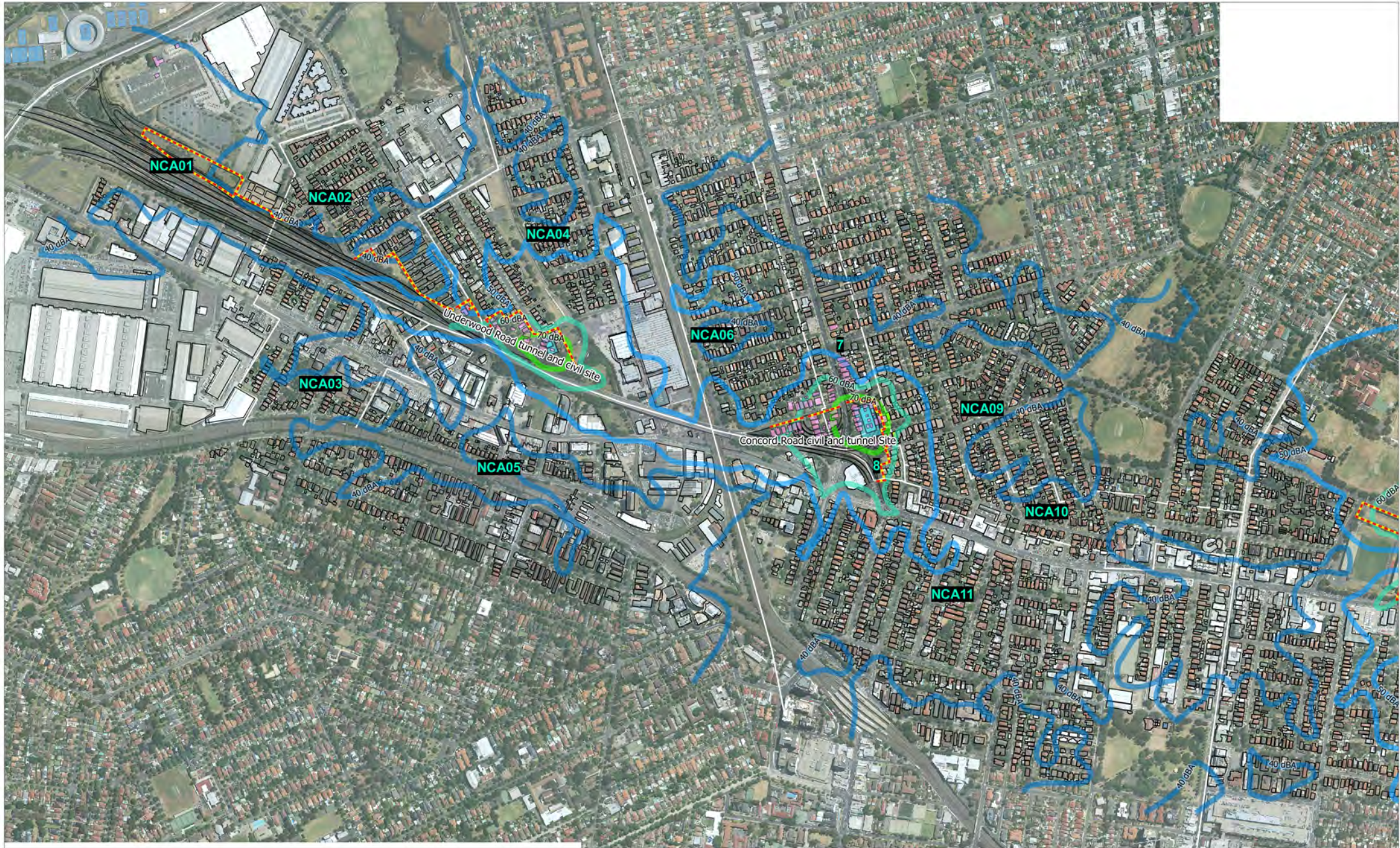
Construction Works	Acquired Buildings	Construction Hoarding
Worst-case Exceedance of NML		
< 10 dB	16 dB - 20 dB	> 25 dB
11 dB - 15 dB	21 dB - 25 dB	
Noise Contours (LAeq(15minute))		
40 dBA	60 dBA	80 dBA
50 dBA	70 dBA	

WestConnex Delivery Authority

WestConnex - M4 East

**Construction Noise Predictions
Tunnelling Sites
Daytime - With Mitigation**

The content contained within this document may be based on third party data. SLR Consulting Australia Pty Ltd does not guarantee the accuracy of such information.



2 LINCOLN STREET
LANE COVE
NSW 2066
AUSTRALIA
T: +61 2 9427 8100
www.slrconsulting.com

Project No.:	610.13569
Date:	16/08/2015
Drawn by:	DS
Scale:	1:13,000
Sheet Size:	@ A4
Projection:	GDA 1994 MGA Zone 56



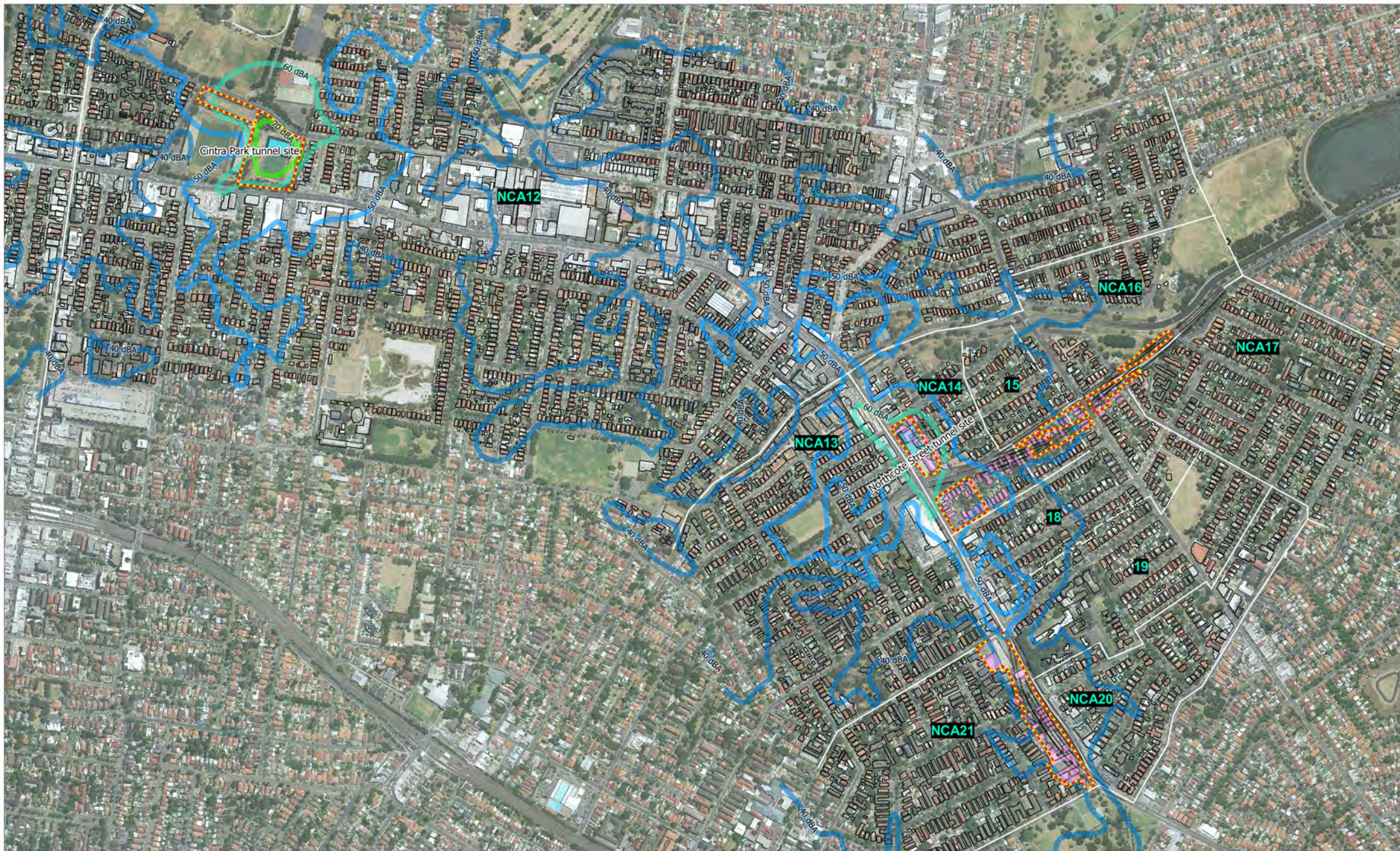
Construction Works	Acquired Buildings	Construction Hoarding
Worst-case Exceedance of NML		
< 10 dB	16 dB - 20 dB	> 25 dB
11 dB - 15 dB	21 dB - 25 dB	
Noise Contours (LAeq(15minute))		
40 dBA	60 dBA	80 dBA
50 dBA	70 dBA	

WestConnex Delivery Authority

WestConnex - M4 East

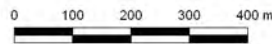
**Construction Noise Predictions
Tunnelling Sites
Night-time - With Mitigation**

The content contained within this document may be based on third party data. SLR Consulting Australia Pty Ltd does not guarantee the accuracy of such information.



2 LINCOLN STREET
LANE COVE
NSW 2066
AUSTRALIA
T: +61 2 9427 8100
www.slrconsulting.com

Project No.:	610.13569
Date:	16/08/2015
Drawn by:	DS
Scale:	1:13,000
Sheet Size:	@ A4
Projection:	GDA 1994 MGA Zone 56



Construction Works	Acquired Buildings	Construction Hoarding
Worst-case Exceedance of NML		
< 10 dB	16 dB - 20 dB	> 25 dB
11 dB - 15 dB	21 dB - 25 dB	
Noise Contours (LAeq(15minute))		
40 dBA	60 dBA	80 dBA
50 dBA	70 dBA	

WestConnex Delivery Authority

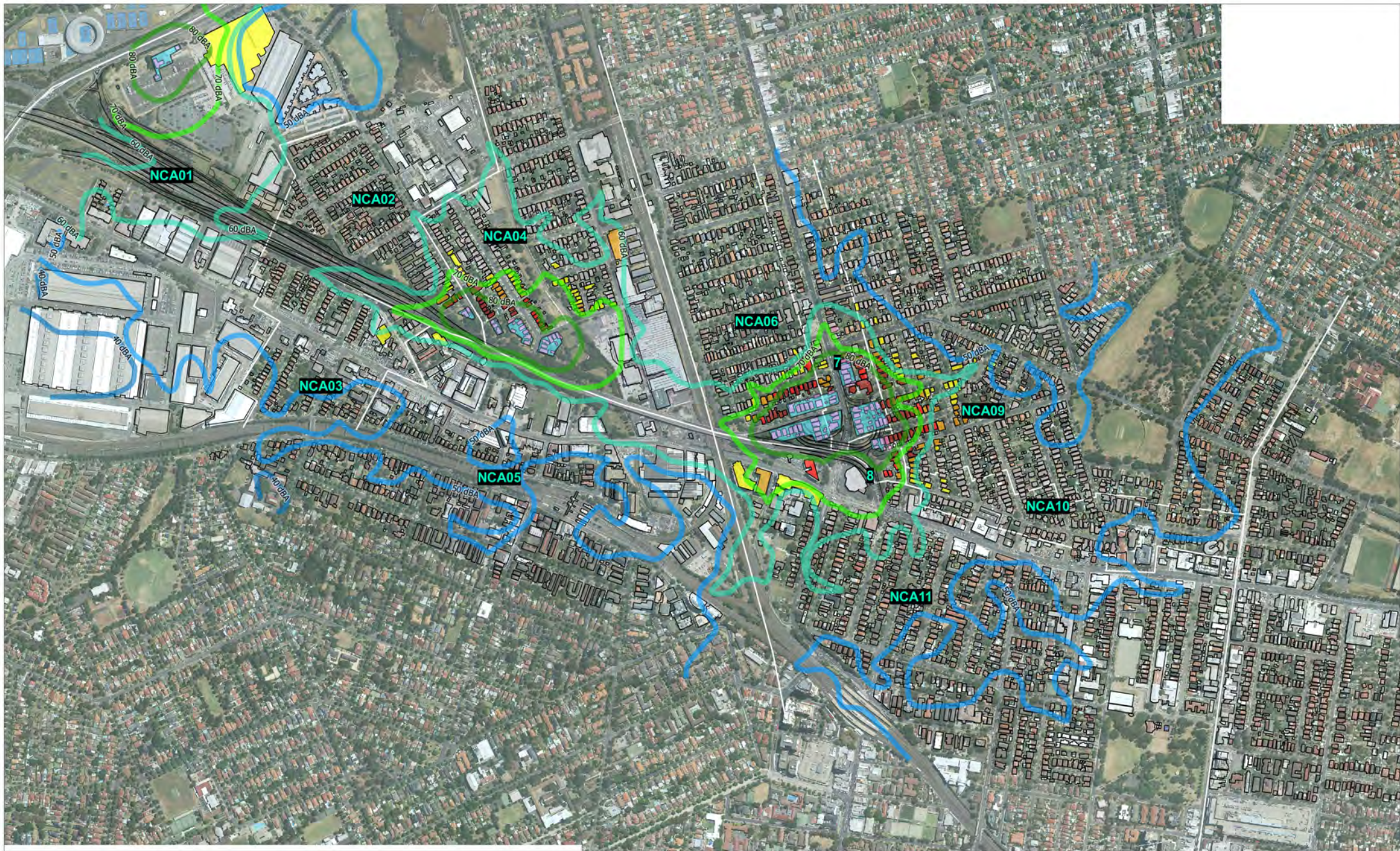
WestConnex - M4 East

**Construction Noise Predictions
Tunnelling Sites
Night-time - With Mitigation**

The content contained within this document may be based on third party data. SLR Consulting Australia Pty Ltd does not guarantee the accuracy of such information.

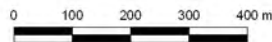
(blank page)

Construction Noise - Demolition of Acquisitions Properties



2 LINCOLN STREET
LANE COVE
NSW 2066
AUSTRALIA
T: +61 2 9427 8100
www.slrconsulting.com

Project No.:	510.13569
Date:	16/08/2015
Drawn by:	DS
Scale:	1:13,000
Sheet Size:	@ A4
Projection:	GDA 1994 MGA Zone 56



Construction Works	Acquired Buildings	Construction Hoarding
Worst-case Exceedance of NML		
< 10 dB	16 dB - 20 dB	> 25 dB
11 dB - 15 dB	21 dB - 25 dB	
Noise Contours (LAeq(15minute))		
40 dBA	60 dBA	80 dBA
50 dBA	70 dBA	

WestConnex Delivery Authority

WestConnex - M4 East

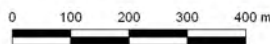
**Construction Noise Predictions
Demolition of Acquisition Properties
Daytime**

The content contained within this document may be based on third party data. SLR Consulting Australia Pty Ltd does not guarantee the accuracy of such information.



2 LINCOLN STREET
LANE COVE
NSW 2066
AUSTRALIA
T: +61 2 9427 8100
www.slrconsulting.com

Project No.:	610.13569
Date:	16/08/2015
Drawn by:	DS
Scale:	1:13,000
Sheet Size:	@ A4
Projection:	GDA 1994 MGA Zone 56



Construction Works	Acquired Buildings	Construction Hoarding
Worst-case Exceedance of NML		
< 10 dB	16 dB - 20 dB	> 25 dB
11 dB - 15 dB	21 dB - 25 dB	
Noise Contours (LAeq(15minute))		
40 dBA	60 dBA	80 dBA
50 dBA	70 dBA	

WestConnex Delivery Authority

WestConnex - M4 East
Construction Noise Predictions
Demolition of Acquisition Properties
Daytime

The content contained within this document may be based on third party data. SLR Consulting Australia Pty Ltd does not guarantee the accuracy of such information.

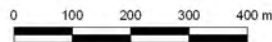
(blank page)

Construction Noise - Ventilation Facilities



2 LINCOLN STREET
LANE COVE
NSW 2066
AUSTRALIA
T: +61 2 9427 8100
www.slrconsulting.com

Project No.:	510.13569
Date:	16/08/2015
Drawn by:	DS
Scale:	1:13,000
Sheet Size:	@ A4
Projection:	GDA 1994 MGA Zone 56



	Construction Works		Acquired Buildings		Construction Hoarding
Worst-case Exceedance of NML					
	< 10 dB		16 dB - 20 dB		> 25 dB
	11 dB - 15 dB		21 dB - 25 dB		
Noise Contours (LAeq(15minute))					
	40 dBA		60 dBA		80 dBA
	50 dBA		70 dBA		

WestConnex Delivery Authority

WestConnex - M4 East

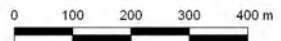
**Construction Noise Predictions
Ventilation Facilities Construction
Daytime**

The content contained within this document may be based on third party data. SLR Consulting Australia Pty Ltd does not guarantee the accuracy of such information.



2 LINCOLN STREET
LANE COVE
NSW 2066
AUSTRALIA
T: +61 2 9427 8100
www.slrconsulting.com

Project No.:	610.13569
Date:	16/08/2015
Drawn by:	DS
Scale:	1:13,000
Sheet Size:	@ A4
Projection:	GDA 1994 MGA Zone 56



Construction Works	Acquired Buildings	Construction Hoarding
Worst-case Exceedance of NML		
< 10 dB	16 dB - 20 dB	> 25 dB
11 dB - 15 dB	21 dB - 25 dB	
Noise Contours (LAeq(15minute))		
40 dBA	60 dBA	80 dBA
50 dBA	70 dBA	

WestConnex Delivery Authority

WestConnex - M4 East

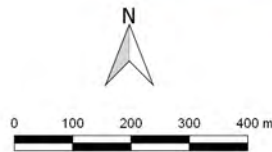
**Construction Noise Predictions
Ventilation Facilities Construction
Daytime**

The content contained within this document may be based on third party data. SLR Consulting Australia Pty Ltd does not guarantee the accuracy of such information.



2 LINCOLN STREET
LANE COVE
NSW 2066
AUSTRALIA
T: +61 2 9427 8100
www.slrconsulting.com

Project No.:	610.13569
Date:	16/08/2015
Drawn by:	DS
Scale:	1:13,000
Sheet Size:	@ A4
Projection:	GDA 1994 MGA Zone 56



Construction Works	Acquired Buildings	Construction Hoarding
Worst-case Exceedance of NML		
< 10 dB	16 dB - 20 dB	> 25 dB
11 dB - 15 dB	21 dB - 25 dB	
Noise Contours (LAeq(15minute))		
40 dBA	60 dBA	80 dBA
50 dBA	70 dBA	

WestConnex Delivery Authority

WestConnex - M4 East

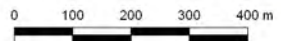
**Construction Noise Predictions
Ventilation Facilities Construction
Night-time**

The content contained within this document may be based on third party data. SLR Consulting Australia Pty Ltd does not guarantee the accuracy of such information.



2 LINCOLN STREET
LANE COVE
NSW 2066
AUSTRALIA
T: +61 2 9427 8100
www.slrconsulting.com

Project No.:	610.13569
Date:	16/08/2015
Drawn by:	DS
Scale:	1:13,000
Sheet Size:	@ A4
Projection:	GDA 1994 MGA Zone 56



Construction Works	Acquired Buildings	Construction Hoarding
Worst-case Exceedance of NML		
< 10 dB	16 dB - 20 dB	> 25 dB
11 dB - 15 dB	21 dB - 25 dB	
Noise Contours (LAeq(15minute))		
40 dBA	60 dBA	80 dBA
50 dBA	70 dBA	

WestConnex Delivery Authority

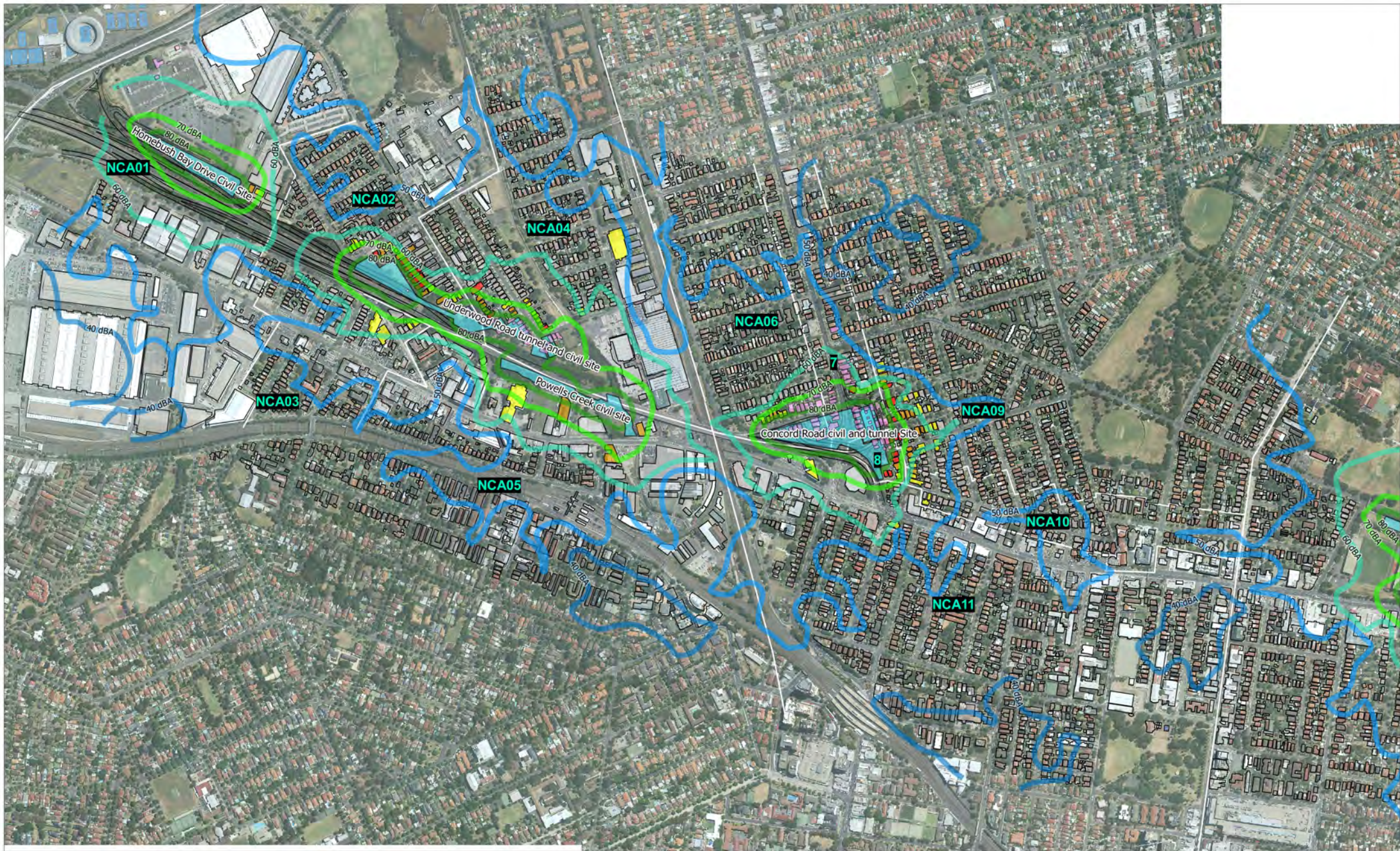
WestConnex - M4 East

**Construction Noise Predictions
Ventilation Facilities Construction
Night-time**

The content contained within this document may be based on third party data. SLR Consulting Australia Pty Ltd does not guarantee the accuracy of such information.

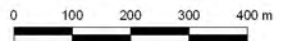
(blank page)

Construction Noise - Cumulative Noise Impacts



2 LINCOLN STREET
LANE COVE
NSW 2066
AUSTRALIA
T: +61 2 9427 8100
www.slrconsulting.com

Project No.:	510.13569
Date:	16/08/2015
Drawn by:	DS
Scale:	1:13,000
Sheet Size:	@ A4
Projection:	GDA 1994 MGA Zone 56



Construction Works	Acquired Buildings	Construction Hoarding
Worst-case Exceedance of NML		
< 10 dB	16 dB - 20 dB	> 25 dB
11 dB - 15 dB	21 dB - 25 dB	
Noise Contours (LAeq(15minute))		
40 dBA	60 dBA	80 dBA
50 dBA	70 dBA	

WestConnex Delivery Authority



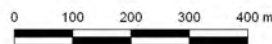
**Construction Noise Predictions
Cumulative Noise Impacts
Daytime - Without Mitigation**

The content contained within this document may be based on third party data. SLR Consulting Australia Pty Ltd does not guarantee the accuracy of such information.



2 LINCOLN STREET
LANE COVE
NSW 2066
AUSTRALIA
T: +61 2 9427 8100
www.slrconsulting.com

Project No.:	610.13569
Date:	16/08/2015
Drawn by:	DS
Scale:	1:13,000
Sheet Size:	@ A4
Projection:	GDA 1994 MGA Zone 56



Construction Works	Acquired Buildings	Construction Hoarding
Worst-case Exceedance of NML		
< 10 dB	16 dB - 20 dB	> 25 dB
11 dB - 15 dB	21 dB - 25 dB	
Noise Contours (LAeq(15minute))		
40 dBA	60 dBA	80 dBA
50 dBA	70 dBA	

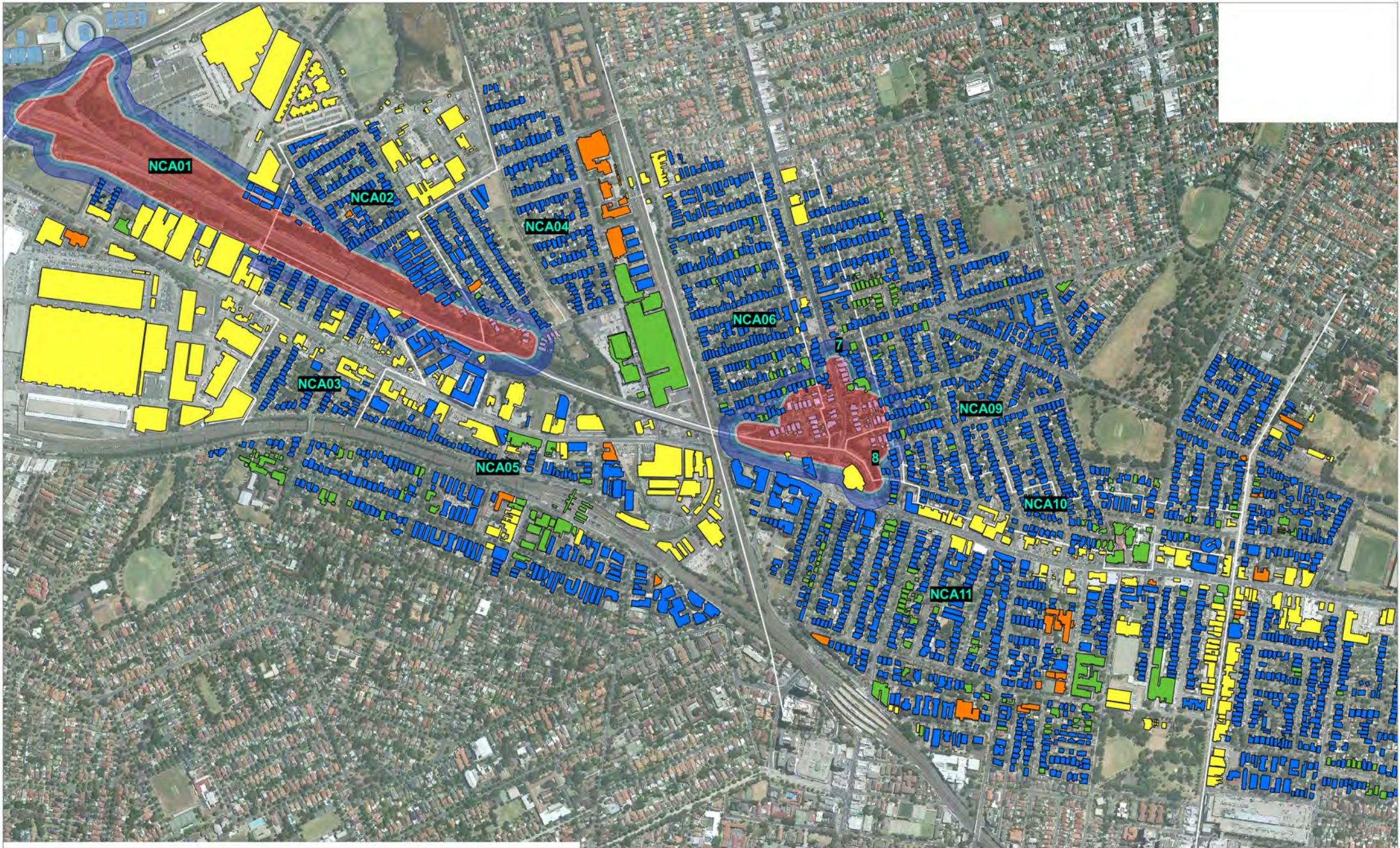
WestConnex Delivery Authority

WestConnex - M4 East

**Construction Noise Predictions
Cumulative Noise Impacts
Daytime - Without Mitigation**

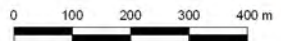
The content contained within this document may be based on third party data. SLR Consulting Australia Pty Ltd does not guarantee the accuracy of such information.

(blank page)



2 LINCOLN STREET
LANE COVE
NSW 2066
AUSTRALIA
T: +61 2 9427 8100
www.slrconsulting.com

Project No.:	510.13569
Date:	24/06/2015
Drawn by:	DS
Scale:	1:13,000
Sheet Size:	@ A4
Projection:	GDA 1994 MGA Zone 56



Construction Vibration Separation Distances

[Red]	Residential and Light Commercial (BS7385)
[Light Blue]	Group 2 (DIN1450 - Typical)
[Medium Blue]	Group 3 (DIN1450 - Structurally Unsound)
[Dark Blue]	Human Response

Building Category

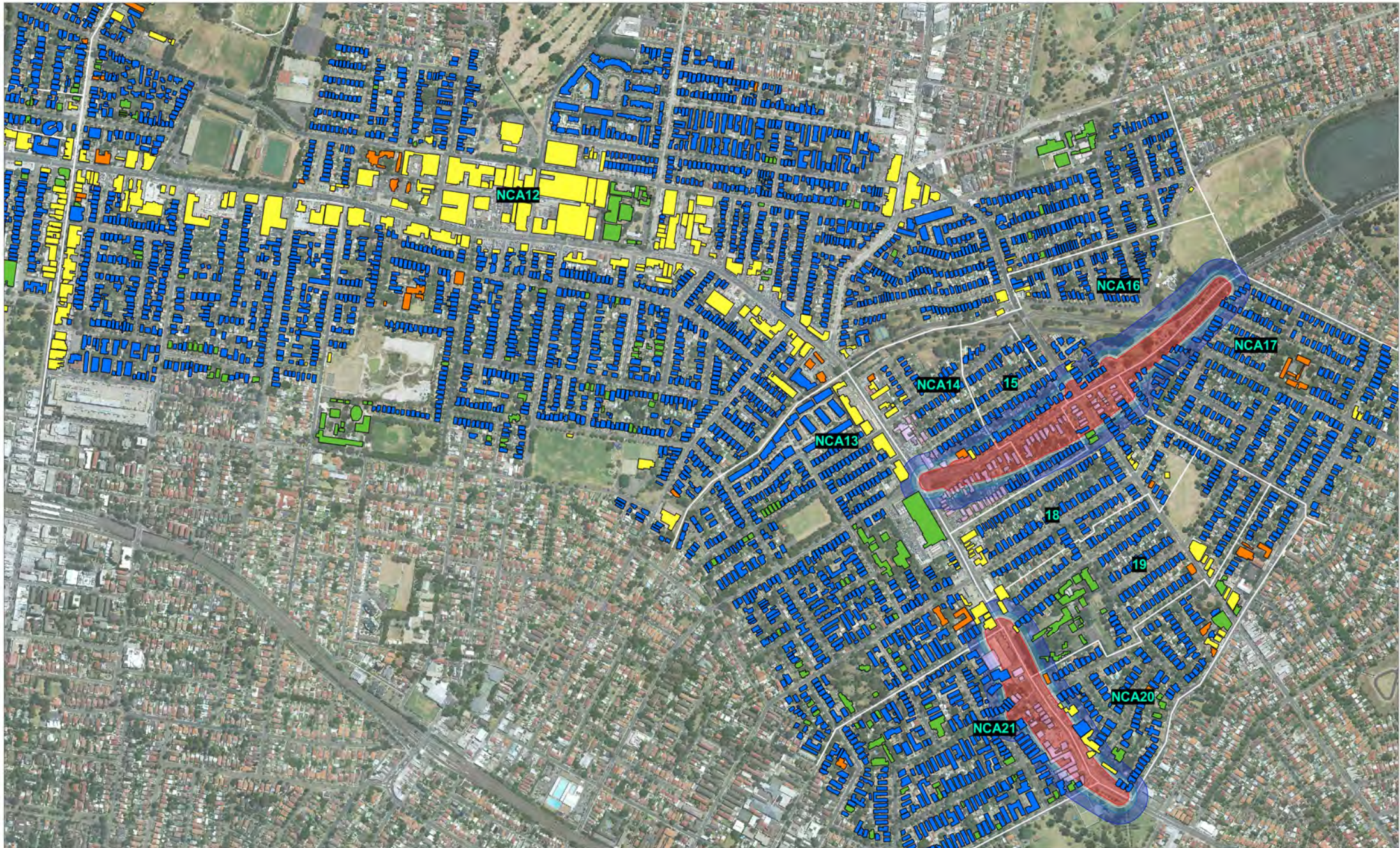
[Blue]	Residential
[Yellow]	Commercial
[Orange]	Other Sensitive
[Green]	Heritage
[Purple]	Acquired Buildings

WestConnex Delivery Authority

WestConnex - M4 East

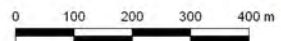
**Construction Vibration Impacts
Road Works**

The content contained within this document may be based on third party data. SLR Consulting Australia Pty Ltd does not guarantee the accuracy of such information.



2 LINCOLN STREET
LANE COVE
NSW 2066
AUSTRALIA
T: +61 2 9427 8100
www.slrconsulting.com

Project No.:	610.13569
Date:	24/06/2015
Drawn by:	DS
Scale:	1:13,000
Sheet Size:	@ A4
Projection:	GDA 1994 MGA Zone 56



- Construction Vibration Separation Distances**
- Residential and Light Commercial (BS7385)
 - Group 2 (DIN1450 - Typical)
 - Group 3 (DIN1450 - Structurally Unsound)
 - Human Response

- Building Category**
- Residential
 - Commercial
 - Other Sensitive
 - Heritage
 - Acquired Buildings

WestConnex Delivery Authority



**Construction Vibration Impacts
Road Works**

The content contained within this document may be based on third party data. SLR Consulting Australia Pty Ltd does not guarantee the accuracy of such information.