



2 LINCOLN STREET
LANE COVE
NSW 2066
AUSTRALIA
T: +61 2 9427 8100
www.slrconsulting.com

Project No.:	610.13569
Date:	6/08/2015
Drawn by:	ALW
Scale:	1:13,000
Sheet Size:	@ A4
Projection:	GDA 1994 MGA Zone 56



Acquired Buildings	Residential	Other Sensitive
Criteria - Daytime		
45 dB	55 dB	58 dB
50 dB	56 dB	59 dB
54 dB	57 dB	60 dB

WestConnex Delivery Authority

WestConnex - M4 East

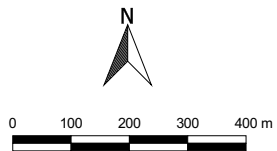
**Operational Noise Criteria Map
Daytime**

The content contained within this document may be based on third party data. SLR Consulting Australia Pty Ltd does not guarantee the accuracy of such information.



2 LINCOLN STREET
LANE COVE
NSW 2066
AUSTRALIA
T: +61 2 9427 8100
www.slrconsulting.com

Project No.:	610.13569
Date:	6/08/2015
Drawn by:	ALW
Scale:	1:13,000
Sheet Size:	@ A4
Projection:	GDA 1994 MGA Zone 56



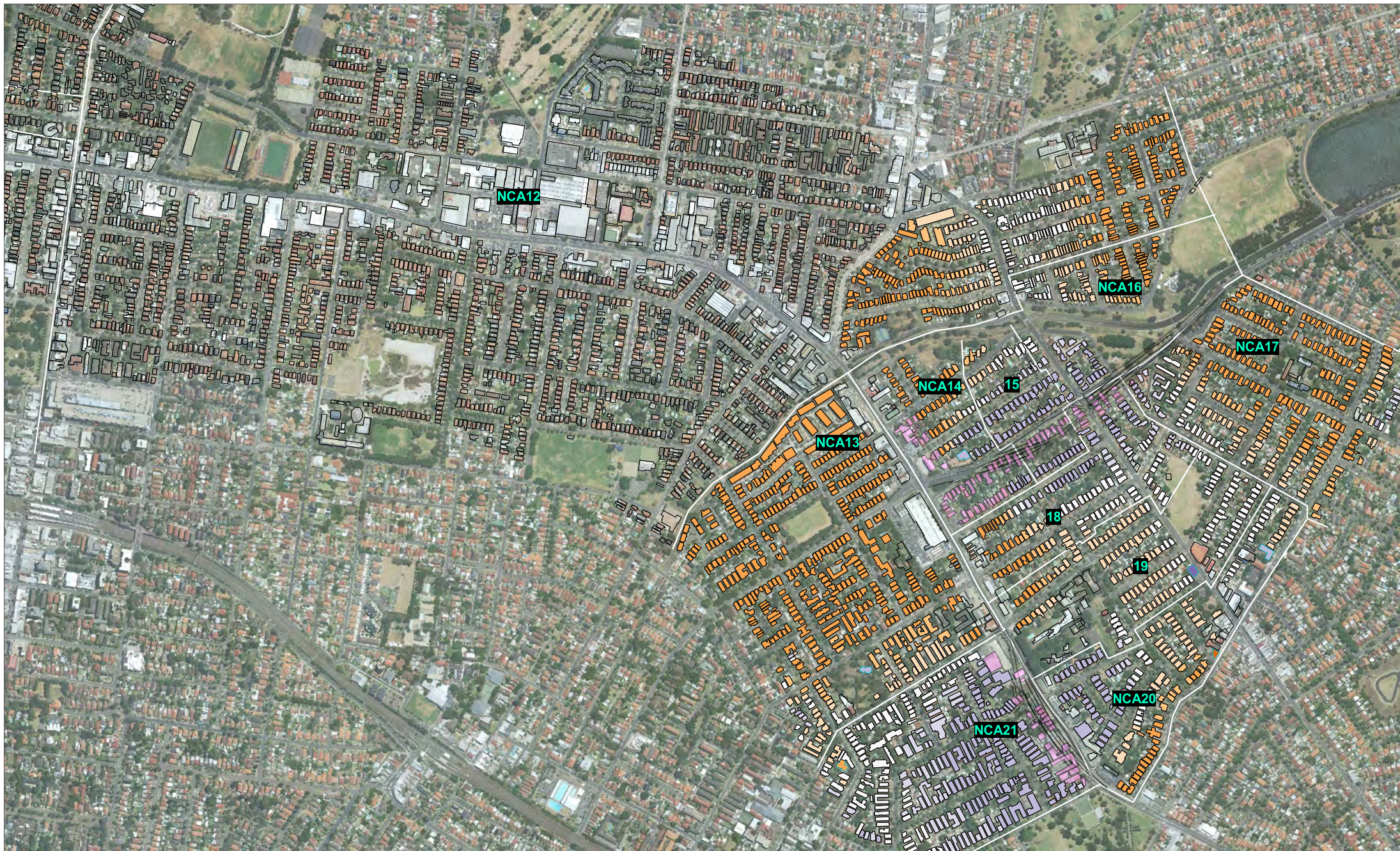
Acquired Buildings	Residential	Other Sensitive
Criteria - Night-time		
45 dB	51 dB	54 dB
49 dB	52 dB	55 dB
50 dB	53 dB	60 dB

WestConnex Delivery Authority

WestConnex - M4 East

**Operational Noise Criteria Map
Night-time**

The content contained within this document may be based on third party data. SLR Consulting Australia Pty Ltd does not guarantee the accuracy of such information.



2 LINCOLN STREET
LANE COVE
NSW 2066
AUSTRALIA
T: +61 2 9427 8100
www.slrconsulting.com

Project No.:	610.13569
Date:	6/08/2015
Drawn by:	ALW
Scale:	1:13,000
Sheet Size:	@ A4
Projection:	GDA 1994 MGA Zone 56



Acquired Buildings	Residential	Other Sensitive
Criteria - Night-time		
45 dB	51 dB	54 dB
49 dB	52 dB	55 dB
50 dB	53 dB	60 dB

WestConnex Delivery Authority

WestConnex - M4 East

**Operational Noise Criteria Map
Night-time**

The content contained within this document may be based on third party data. SLR Consulting Australia Pty Ltd does not guarantee the accuracy of such information.

(blank page)

Appendix F1a

Report 610.12109

Page 1 of 2

Traffic Data - Validation

	Step 1 - Free Flow Traffic Volumes					
	Day			Night		
	Volume	HGV	Speed	Volume	HGV	Speed
M4 Motorway, west of Sydney St Ramp Eastbound	9883	1023	76	942	179	85
M4 Motorway, east of Sydney St Ramp Westbound	9212	986	75	1336	140	87
Sydney St, west of Concord Rd	817	24	30	189	11	32
Concord Rd, north of Sydney St Northbound	1172	46	39	294	15	45
Concord Rd, north of Sydney St Southbound	1260	37	42	338	14	46
Wattle St, btwn Parramatta Rd and Ramsay St Northbound	1545	102	51	661	121	52
Wattle St, btwn Parramatta Rd and Ramsay St Southbound	1965	122	49	1165	106	56
Ramsay St, south of Wattle St	880	16	32	159	7	36
Debroyd Pde, east of Ramsay St Northbound	1897	44	52	658	97	54
Debroyd Pde, east of Ramsay St Southbound	2472	46	48	1312	78	52
Parramatta Rd, at Bland St intersection Westbound	2078	64	52	956	61	56
Parramatta Rd, at Bland St intersection Eastbound	1713	62	53	681	94	54
M4 Motorway, WB Off-Ramp to Homebush Bay Dr intersection	1119	72	-	162	8	-
Parramatta Rd, btwn Oprington St & Hume Hwy Westbound	2276	48	44	1120	68	48
Parramatta Rd, btwn Oprington St & Hume Hwy Eastbound	3596	191	46	2051	87	51

Appendix F1a

Report 610.12109

Page 2 of 2

Traffic Data - Validation

	Step 2 – 15hr and 9hr Traffic Volumes					
	Day			Night		
	Volume	HGV	Speed	Volume	HGV	Speed
M4 Motorway, west of Sydney St Ramp Eastbound	37489	2549	76	8279	1374	85
M4 Motorway, east of Sydney St Ramp Westbound	34558	2315	75	7394	791	87
Sydney St, west of Concord Rd	9365	534	30	1538	138	32
Concord Rd, north of Sydney St Northbound	14217	682	39	2713	157	45
Concord Rd, north of Sydney St Southbound	14035	828	42	2044	90	46
Wattle St, btwn Parramatta Rd and Ramsay St Northbound	16688	1886	51	4313	871	52
Wattle St, btwn Parramatta Rd and Ramsay St Southbound	16353	1635	49	4278	646	56
Ramsay St, south of Wattle St	12298	439	32	1316	49	36
Debroyd Pde, east of Ramsay St Northbound	23106	878	52	5292	434	54
Debroyd Pde, east of Ramsay St Southbound	22401	963	48	5037	252	52
Parramatta Rd, at Bland St intersection Westbound	21056	1369	52	4501	333	56
Parramatta Rd, at Bland St intersection Eastbound	22010	1563	53	5317	617	54
M4 Motorway, WB Off-Ramp to Homebush Bay Dr intersection	4271	145	-	771	30	-
Parramatta Rd, btwn Oprington St & Hume Hwy Westbound	22865	1280	44	4973	323	48
Parramatta Rd, btwn Oprington St & Hume Hwy Eastbound	23136	1781	46	4706	353	51

Appendix F2a

Report 610.13569

Page 1 of 3

Traffic Data - 2021 Timeframe 1

Site	No Build				Build			
	15 Hour		9 Hour		15 Hour		9 Hour	
	Volume	HGV	Volume	HGV	Volume	HGV	Volume	HGV
M4 Motorway – Eastbound								
M4 Eastbound	64,532	11,159	15,019	3,294	46,685	6,468	7,635	1,153
Btwn Homebush Bay Drive ON Ramp and Sydney St OFF Ramp	39,831	5,130	9,180	1,135	10,198	534	1,496	42
Btwn Sydney St and Parramatta Rd	29,163	3,864	6,835	948	4,995	316	632	18
M4 Motorway – Westbound								
M4 Westbound (Parramatta Rd Interchange)	36,296	4,693	8,086	869	6,750	315	968	24
Btwn Concord Rd ON Ramp and Homebush Bay OFF Ramp	42,855	5,669	9,496	1,026	8,906	467	1,206	34
Btwn Homebush Bay ON Ramp and Birnie Ave	60,934	10,819	14,129	2,325	44,172	7,731	7,144	929
M4 Motorway Ramps - Eastbound								
M4 EB OFF Ramp To Homebush Bay Drive	31,576	6,299	7,700	2,238	20,779	3,422	3,683	711
M4 EB ON Ramp From Homebush Bay Drive	6,874	270	1,861	79	4,029	175	619	23
M4 EB OFF Ramp To Sydney St	10,668	1,266	2,345	187	5,203	218	864	24
M4 Motorway Ramps - Westbound								
M4 WB ON Ramp From Concord Rd	6,559	977	1,410	158	2,155	152	238	10
M4 WB OFF Ramp To Homebush Bay Drive	6,674	212	2,074	70	6,193	279	1,358	50
M4 WB ON Ramp From Homebush Bay Drive	24,752	5,362	6,707	1,369	13,074	3,281	2,182	401
Parramatta Road – Eastbound & Westbound								
Btwn Birnie Ave and Centenary Drive	36,511	2,605	6,179	244	53,078	4,792	11,820	1,314
Btwn Centenary Drive Flemington Rd	20,617	1,001	2,988	119	31,170	1,898	5,785	409
Btwn Flemington Rd and Potts St	20,617	1,001	2,988	119	31,170	1,898	5,785	409
Btwn Potts St and Bridge Rd	20,617	1,001	2,988	119	31,170	1,898	5,785	409
Btwn Bridge Rd and Knight St	15,823	903	2,771	142	26,706	1,398	5,056	209
Btwn Knight St and George St	15,840	893	3,225	175	29,881	1,535	5,555	226
Btwn George St and Concord Rd	21,492	1,078	4,550	231	34,544	1,647	6,505	241
Btwn Concord Rd and M4 Interchange	17,647	424	4,139	101	22,276	754	3,755	117
Btwn M4 and Wentworth Rd	79,568	8,402	18,759	1,834	35,062	1,542	6,154	193
Btwn Wentworth Rd and Broughton St	74,895	8,247	17,054	1,764	36,600	1,624	6,098	199
Btwn Broughton St and Burwood Rd	74,089	8,111	16,732	1,760	35,345	1,583	5,945	195
Btwn Burwood Rd and Shaftesbury Rd	73,127	8,056	16,212	1,751	35,883	1,573	5,658	193
Btwn Shaftesbury Rd and Harris Rd	69,058	7,800	15,501	1,705	31,593	1,535	5,440	192
Btwn Harris Rd and Arlington St	57,215	7,174	13,180	1,453	21,661	1,287	4,364	161
Btwn Arlington St and Great North Rd	69,037	7,370	14,893	1,468	30,142	1,376	5,638	167
Btwn Great North Rd and Frederick St / Wattle St	72,817	6,821	16,447	1,529	37,434	1,456	7,361	222
Btwn Frederick St and Alt St	37,727	3,517	7,731	601	16,837	615	3,387	96
Btwn Alt St and Bland St	37,727	3,517	7,731	601	16,837	615	3,387	96
Btwn Bland St and Chandos St	39,632	3,537	8,315	594	18,508	632	4,078	96
Btwn Chandos St and Orpington St	39,632	3,537	8,315	594	49,647	3,639	9,100	450
Btwn Orpington St and Dalhousie St	40,947	3,491	7,751	590	49,296	3,395	8,250	440
Btwn Dalhousie St and Ormand St	40,687	3,446	7,707	590	47,091	3,351	7,927	436
Btwn Ormand St and Liverpool Rd	40,687	3,446	7,707	590	47,091	3,351	7,927	436

Appendix F2a

Report 610.13569

Page 2 of 3

Traffic Data - 2021 Timeframe 1

Site	No Build				Build			
	15 Hour		9 Hour		15 Hour		9 Hour	
	Volume	HGV	Volume	HGV	Volume	HGV	Volume	HGV
Btwn Liverpool Rd and Sloane St	52,400	3,947	8,984	645	54,913	3,575	8,896	496
Btwn Sloane St and Old Canterbury Rd	54,898	3,964	9,954	649	57,103	3,595	9,850	495
Homebush Bay Drive – Northbound & Southbound								
Btwn Arthur St and M4 WB ON / OFF Ramps	91,497	13,808	23,327	3,543	90,735	13,258	21,851	3,112
Btwn M4 WB ON / OFF Ramps and M4 EB OFF	68,863	9,158	17,174	2,711	55,517	6,646	12,672	1,622
Btwn M4 EB OFF and M4 EB ON	63,760	6,339	15,103	1,835	52,853	5,040	11,571	1,110
Btwn M4 EB ON and Underwood Rd	67,502	6,424	15,582	1,818	62,116	6,406	13,114	1,275
Concord Road / Leicester Ave – Northbound & Southbound								
South of Parramatta Rd	30,961	1,484	6,007	213	31,347	856	5,855	99
Concord Road – Northbound & Southbound								
Btwn Parramatta Rd and M4 WB ON Ramp	34,088	1,912	6,827	391	30,756	447	5,484	58
Btwn M4 WB ON Ramp and Sydney St	27,529	936	5,417	234	31,255	481	5,751	83
Btwn Sydney St and Patterson St	29,814	1,103	5,869	122	36,052	645	6,441	111
North of Patterson St	29,441	791	5,815	98	35,066	583	6,611	93
Sydney Street – Eastbound & Westbound								
West of Concord Rd	10,668	1,266	2,345	187	5,203	218	864	24
Patterson Street – Eastbound & Westbound								
Btwn Concord Rd and Gipps St	14,563	402	3,266	46	14,871	199	3,606	51
Gipps Street – Eastbound & Westbound								
Btwn Patterson St and John St	13,116	351	3,071	38	12,418	146	3,183	42
Frederick Street – Eastbound & Westbound								
Btwn Parramatta Rd and John St	26,567	1,347	6,282	276	25,654	1,316	6,247	294
Wattle Street – Eastbound								
Btwn Parramatta Rd and Ramsey St	20,621	1,858	5,661	679	11,661	619	3,081	197
Btwn Ramsey St and Timbrell Drive	24,113	2,105	6,551	688	25,572	1,964	6,654	523
Wattle Street – Westbound								
Btwn Timbrell Dr and Ramsey St	22,136	2,158	5,360	395	24,270	2,053	5,398	310
Btwn Ramsey St and Parramatta Rd	20,185	2,136	5,065	391	11,099	575	3,002	108
Great North Road – Northbound & Southbound								
Btwn Parramatta Rd and Ramsey St	22,153	1,291	3,359	74	18,493	924	3,086	63
First Avenue – Eastbound & Westbound								
Btwn Great North Rd and Ingham Ave	2,450	15	444	3	2,435	16	400	2
Btwn Ingham Ave and Arthur St	2,323	11	385	1	2,719	19	478	1
Arthur Street – Northbound & Southbound								
Btwn First Ave and Timbrell Drive	7,170	38	1,103	2	9,152	149	1,640	7
Timbrell Drive – Northbound & Southbound								
Btwn Arthur St and Dobroyd Parade	7,170	38	1,103	2	9,152	149	1,640	7
Ramsay Street – Northbound & Southbound								
Btwn Great North Rd and Fairlight Rd	6,654	110	1,410	15	6,141	93	1,366	22
Btwn Fairlight Rd and Wattle St	17,748	481	3,416	32	13,482	152	3,070	38
Btwn Wattle St and Dalhousie St	13,022	121	2,478	23	13,005	112	2,268	17
Bland Street – Eastbound & Westbound								
West of Parramatta Rd	9,627	93	1,792	10	8,706	76	1,760	10

Traffic Data - 2021 Timeframe 1

Site	No Build				Build			
	15 Hour		9 Hour		15 Hour		9 Hour	
	Volume	HGV	Volume	HGV	Volume	HGV	Volume	HGV
Btwn Parramatta Rd and Ramsey St	7,334	61	1,120	13	6,270	33	996	6
Dalhousie Street – Northbound & Southbound								
Btwn Parramatta Rd and Ramsey St	2,813	52	371	1	4,203	49	644	4
Btwn Ramsey and Mortley Ave	2,211	12	380	1	2,228	9	404	2
Orpington Street – Eastbound & Westbound								
Btwn Elizabeth St and Parramatta Rd	7,371	64	1,734	7	9,116	267	2,061	13
Liverpool Road – Eastbound & Westbound								
Btwn Grosvenor Crescent and Parramatta Rd	14,502	532	1,618	55	13,554	697	1,504	72
Sloan Street – Northbound & Southbound								
Btwn Grosvenor Crescent and Parramatta Rd	7,490	103	1,767	21	7,586	103	1,766	19
Btwn Parramatta Rd and Ramsey St	5,970	86	1,499	18	5,772	80	1,362	17
Mortley Avenue – Eastbound & Westbound								
Btwn Dobroyd Parade and Dalhousie	2,187	9	326	1	1,877	4	299	0
WestConnex - Eastbound								
EB connection between M4 and M4 new tunnel	0	0	0	0	17,035	2,522	2,623	400
Homebush Bay Dr EB on ramp to M4 New Tunnel	0	0	0	0	2,702	165	452	23
Homebush Bay Dr to Sydney St	0	0	0	0	19,737	2,687	3,075	422
Concord Rd EB on-ramp SB on to WestConnex	0	0	0	0	3,763	33	794	15
Concord Rd EB on-ramp NB on to WestConnex	0	0	0	0	5,329	104	839	27
Westconnex to Wattle St	0	0	0	0	28,829	2,824	4,707	465
WestConnex EB OFF ramp to Wattle St	0	0	0	0	13,310	1,358	2,809	310
WestConnex EB OFF ramp to east of Bland St	0	0	0	0	15,520	1,466	1,898	155
WestConnex - Westbound								
WestConnex New Tunnel to M4 WB	0	0	0	0	15,430	2,637	2,559	329
WestConnex New Tunnel to Homebush Bay Drive	0	0	0	0	4,805	273	1,095	48
Sydney St to Homebush Bay Dr	0	0	0	0	20,235	2,910	3,654	377
WestConnex WB to Concord Rd NB	0	0	0	0	5,145	60	634	6
WestConnex WB to Concord Rd SB	0	0	0	0	3,497	88	1,013	15
Wattle to WestConnex	0	0	0	0	28,876	3,057	5,301	397
WestConnex WB ON ramp from Wattle St	0	0	0	0	13,257	1,517	2,177	198
WestConnex WB ON ramp from east of Bland St	0	0	0	0	15,619	1,541	3,124	199
G-loop WB ON ramp from HBD to M4 W	0	0	0	0	8,150	1,353	1,459	168
WestConnex WB on ramp from PR to M4	0	0	0	0	2,654	186	506	35
WestConnex SB ON ramp from Concord Rd to M4 Existing	0	0	0	0	3,570	250	680	48

Note: The above table provides a summary of changes in traffic at key intersection locations, it should be noted that not all traffic changes on secondary roads have been documented

Traffic Data - 2031 Timeframe 2

Site	No Build				Build			
	15 Hour		9 Hour		15 Hour		9 Hour	
	Volume	HGV	Volume	HGV	Volume	HGV	Volume	HGV
M4 Motorway – Eastbound								
M4 Eastbound	66,322	11,606	15,876	3,704	67,677	11,893	11,019	2,121
Btwn Homebush Bay Drive ON Ramp and Sydney St OFF Ramp	41,589	5,620	10,173	1,385	12,498	625	1,869	49
Btwn Sydney St and Parramatta Rd	30,217	4,330	7,409	1,152	6,673	429	745	17
M4 Motorway – Westbound								
M4 Westbound (Parramatta Rd Interchange)	37,888	5,425	8,656	985	8,129	303	1,174	28
Btwn Concord Rd ON Ramp and Homebush Bay OFF Ramp	44,635	6,373	10,189	1,201	10,529	490	1,475	41
Btwn Homebush Bay ON Ramp and Birnie Ave	64,586	11,613	15,180	2,497	68,690	13,828	10,808	1,904
M4 Motorway Ramps - Eastbound								
M4 EB OFF Ramp To Homebush Bay Drive	32,206	6,268	7,727	2,375	19,619	2,814	3,557	522
M4 EB ON Ramp From Homebush Bay Drive	7,473	282	2,024	56	5,904	313	853	46
M4 EB OFF Ramp To Sydney St	11,372	1,291	2,763	233	5,825	196	1,124	32
M4 Motorway Ramps - Westbound								
M4 WB ON Ramp From Concord Rd	6,747	949	1,533	216	2,400	187	301	13
M4 WB OFF Ramp To Homebush Bay Drive	6,050	209	1,929	59	9,632	564	1,871	109
M4 WB ON Ramp From Homebush Bay Drive	26,001	5,448	6,920	1,356	11,044	2,307	1,725	272
Parramatta Road – Eastbound & Westbound								
Btwn Birnie Ave and Centenary Drive	45,796	3,242	8,388	576	57,332	4,212	13,010	1,187
Btwn Centenary Drive Flemington Rd	27,582	1,253	4,415	219	37,124	1,922	7,893	489
Btwn Flemington Rd and Potts St	27,582	1,253	4,415	219	37,124	1,922	7,893	489
Btwn Potts St and Bridge Rd	27,582	1,253	4,415	219	37,124	1,922	7,893	489
Btwn Bridge Rd and Knight St	20,218	1,160	3,345	210	31,948	1,683	6,361	309
Btwn Knight St and George St	19,779	1,079	3,916	249	35,561	1,847	7,006	342
Btwn George St and Concord Rd	24,080	1,263	5,286	316	40,640	2,070	8,017	365
Btwn Concord Rd and M4 Interchange	19,305	624	4,701	141	26,275	827	5,207	187
Btwn M4 and Wentworth Rd	81,718	9,278	20,292	2,187	41,574	1,745	7,808	268
Btwn Wentworth Rd and Broughton St	77,868	8,918	18,513	2,122	43,839	1,828	7,902	282
Btwn Broughton St and Burwood Rd	76,981	8,823	18,080	2,070	41,309	1,787	7,668	284
Btwn Burwood Rd and Shaftesbury Rd	76,070	8,764	17,457	2,051	42,805	1,790	7,523	285
Btwn Shaftesbury Rd and Harris Rd	71,569	8,419	16,469	1,995	39,360	1,802	7,089	282
Btwn Harris Rd and Arlington St	58,795	7,967	14,144	1,816	28,277	1,602	5,730	244
Btwn Arlington St and Great North Rd	72,413	8,230	16,226	1,836	40,222	1,815	7,360	258
Btwn Great North Rd and Frederick St / Wattle St	74,861	7,322	17,755	1,785	46,324	1,432	9,419	309
Btwn Frederick St and Alt St	41,335	3,885	8,428	738	18,566	555	4,400	140
Btwn Alt St and Bland St	41,335	3,885	8,428	738	18,566	555	4,400	140
Btwn Bland St and Chandos St	43,218	3,963	9,060	731	20,451	576	5,109	140
Btwn Chandos St and Orpington St	43,218	3,963	9,060	731	41,266	1,767	8,949	358
Btwn Orpington St and Dalhousie St	43,942	3,920	8,344	727	41,076	1,684	7,879	349
Btwn Dalhousie St and Ormand St	43,311	3,845	8,307	727	38,399	1,594	7,519	345
Btwn Ormand St and Liverpool Rd	43,311	3,845	8,307	727	38,399	1,594	7,519	345

Appendix F2b

Report 610.13569

Page 2 of 3

Traffic Data - 2031 Timeframe 2

Site	No Build				Build			
	15 Hour		9 Hour		15 Hour		9 Hour	
	Volume	HGV	Volume	HGV	Volume	HGV	Volume	HGV
Btwn Liverpool Rd and Sloane St	59,365	4,500	10,076	790	45,812	1,962	8,521	377
Btwn Sloane St and Old Canterbury Rd	61,015	4,543	11,096	805	48,842	1,994	9,365	397
Homebush Bay Drive – Northbound & Southbound								
Btwn Arthur St and M4 WB ON / OFF Ramps	92,254	14,456	23,424	3,870	90,639	11,726	21,625	2,745
Btwn M4 WB ON / OFF Ramps and M4 EB OFF	71,541	9,686	17,489	2,843	59,757	6,814	13,146	1,555
Btwn M4 EB OFF and M4 EB ON	66,167	6,411	15,683	1,833	59,384	6,007	12,748	1,265
Btwn M4 EB ON and Underwood Rd	71,082	6,581	16,543	1,851	70,432	7,417	14,600	1,446
Concord Road / Leicester Ave – Northbound & Southbound								
South of Parramatta Rd	34,010	1,751	6,960	305	33,251	780	6,404	105
Concord Road – Northbound & Southbound								
Btwn Parramatta Rd and M4 WB ON Ramp	36,745	1,975	7,853	514	32,941	587	6,431	108
Btwn M4 WB ON Ramp and Sydney St	29,998	1,026	6,320	298	33,204	586	6,637	130
Btwn Sydney St and Patterson St	32,551	1,122	6,547	130	42,841	757	7,459	129
North of Patterson St	32,475	835	6,574	109	40,203	677	7,345	110
Sydney Street – Eastbound & Westbound								
West of Concord Rd	11,372	1,291	2,763	233	5,825	196	1,124	32
Patterson Street – Eastbound & Westbound								
Btwn Concord Rd and Gipps St	15,733	377	3,589	45	16,079	201	3,886	56
Gipps Street – Eastbound & Westbound								
Btwn Patterson St and John St	13,839	320	3,347	36	13,088	143	3,385	46
Frederick Street – Eastbound & Westbound								
Btwn Parramatta Rd and John St	27,415	1,631	6,480	269	29,053	1,396	7,256	380
Wattle Street – Eastbound								
Btwn Parramatta Rd and Ramsey St	19,529	2,067	5,691	709	13,573	776	3,119	243
Btwn Ramsey St and Timbrell Drive	23,938	2,454	6,608	719	25,565	1,965	6,665	572
Wattle Street – Westbound								
Btwn Timbrell Dr and Ramsey St	22,596	2,280	5,631	464	20,759	1,406	3,244	188
Btwn Ramsey St and Parramatta Rd	19,914	2,252	5,301	459	11,050	860	2,418	164
Great North Road – Northbound & Southbound								
Btwn Parramatta Rd and Ramsey St	27,630	1,858	4,215	208	23,066	1,013	3,717	66
First Avenue – Eastbound & Westbound								
Btwn Great North Rd and Ingham Ave	2,976	43	512	2	2,953	34	487	2
Btwn Ingham Ave and Arthur St	2,780	46	448	1	3,015	15	540	1
Arthur Street – Northbound & Southbound								
Btwn First Ave and Timbrell Drive	8,677	64	1,205	2	11,060	146	1,835	8
Timbrell Drive – Northbound & Southbound								
Btwn Arthur St and Dobroyd Parade	8,677	64	1,205	2	11,060	146	1,835	8
Ramsay Street – Northbound & Southbound								
Btwn Great North Rd and Fairlight Rd	8,524	270	1,567	14	8,723	203	1,448	16
Btwn Fairlight Rd and Wattle St	22,469	988	3,772	33	19,115	340	3,315	35
Btwn Wattle St and Dalhousie St	14,206	107	2,788	24	13,164	93	2,393	20
Bland Street – Eastbound & Westbound								
West of Parramatta Rd	12,358	249	1,998	10	10,970	116	2,050	10

Appendix F2b

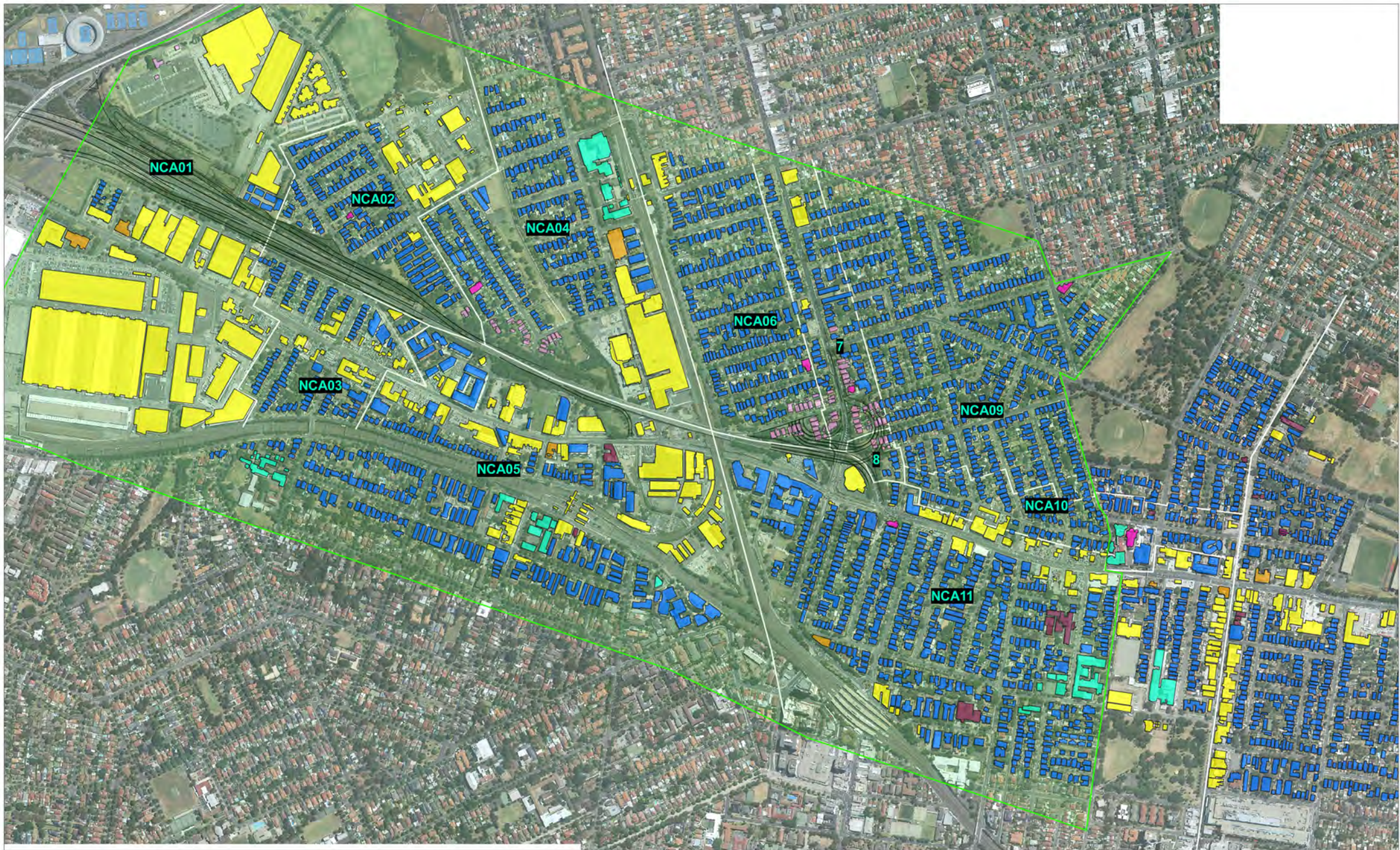
Report 610.13569

Page 3 of 3

Traffic Data - 2031 Timeframe 2

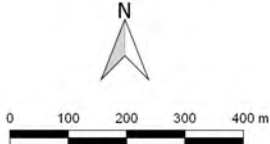
Site	No Build				Build			
	15 Hour		9 Hour		15 Hour		9 Hour	
	Volume	HGV	Volume	HGV	Volume	HGV	Volume	HGV
Btwn Parramatta Rd and Ramsey St	8,391	73	1,267	14	7,876	66	1,178	6
Dalhousie Street – Northbound & Southbound								
Btwn Parramatta Rd and Ramsey St	3,582	81	415	1	4,997	98	721	4
Btwn Ramsey and Mortley Ave	2,848	15	425	1	2,958	26	461	2
Orpington Street – Eastbound & Westbound								
Btwn Elizabeth St and Parramatta Rd	8,240	62	1,979	7	10,197	109	2,347	13
Liverpool Road – Eastbound & Westbound								
Btwn Grosvenor Crescent and Parramatta Rd	20,037	953	2,147	64	13,672	580	1,612	45
Sloan Street – Northbound & Southbound								
Btwn Grosvenor Crescent and Parramatta Rd	8,095	130	1,727	33	7,877	121	1,727	44
Btwn Parramatta Rd and Ramsey St	7,526	88	1,613	19	6,627	105	1,403	21
Mortley Avenue – Eastbound & Westbound								
Btwn Dobroyd Parade and Dalhousie	2,728	114	372	1	2,154	12	318	2
WestConnex - Eastbound								
EB connection between M4 and M4 new tunnel	0	0	0	0	37,712	8,471	5,840	1,551
Homebush Bay Dr EB on ramp to M4 New Tunnel	0	0	0	0	3,752	296	607	45
Homebush Bay Dr to Sydney St	0	0	0	0	41,464	8,767	6,447	1,595
Concord Rd EB on-ramp SB on to WestConnex	0	0	0	0	6,205	104	952	20
Concord Rd EB on-ramp NB on to WestConnex	0	0	0	0	6,378	212	1,023	49
Westconnex to Wattle St	0	0	0	0	54,047	9,082	8,422	1,664
WestConnex EB OFF ramp to Wattle St	0	0	0	0	12,975	1,358	2,716	321
WestConnex EB OFF ramp to east of Bland St	0	0	0	0	11,482	649	1,437	104
WestConnex EB ON ramp from Wattle St To CWL-D	0	0	0	0	4,954	102	721	12
WestConnex - Westbound								
WestConnex New Tunnel to M4 WB	0	0	0	0	40,824	9,762	6,351	1,418
WestConnex New Tunnel to Homebush Bay Drive	0	0	0	0	7,422	553	1,501	106
Sydney St to Homebush Bay Dr	0	0	0	0	48,246	10,315	7,852	1,524
WestConnex WB to Concord Rd NB	0	0	0	0	8,518	170	913	14
WestConnex WB to Concord Rd SB	0	0	0	0	4,563	206	1,291	36
Wattle to WestConnex	0	0	0	0	61,327	10,692	10,056	1,574
WestConnex WB ON ramp from Wattle St	0	0	0	0	5,749	482	479	17
WestConnex WB ON ramp from east of Bland St	0	0	0	0	9,333	542	2,403	114
G-loop WB ON ramp from HBD to M4 W	0	0	0	0	8,502	1,279	1,628	176
WestConnex WB Off ramp to Wattle St From CWL-D	0	0	0	0	11,911	264	1,946	31
WestConnex WB on ramp from PR to M4	0	0	0	0	2,663	186	507	36
WestConnex SB ON ramp from Concord Rd to M4 Existing	0	0	0	0	3,914	274	746	52

Note: The above table provides a summary of changes in traffic at key intersection locations, it should be noted that not all traffic changes on secondary roads have been documented



2 LINCOLN STREET
LANE COVE
NSW 2066
AUSTRALIA
T: +61 2 9427 8100
www.slrconsulting.com

Project No.:	510.13569
Date:	14/08/2015
Drawn by:	DS
Scale:	1:13,000
Sheet Size:	@ A4
Projection:	GDA 1994 MGA Zone 56



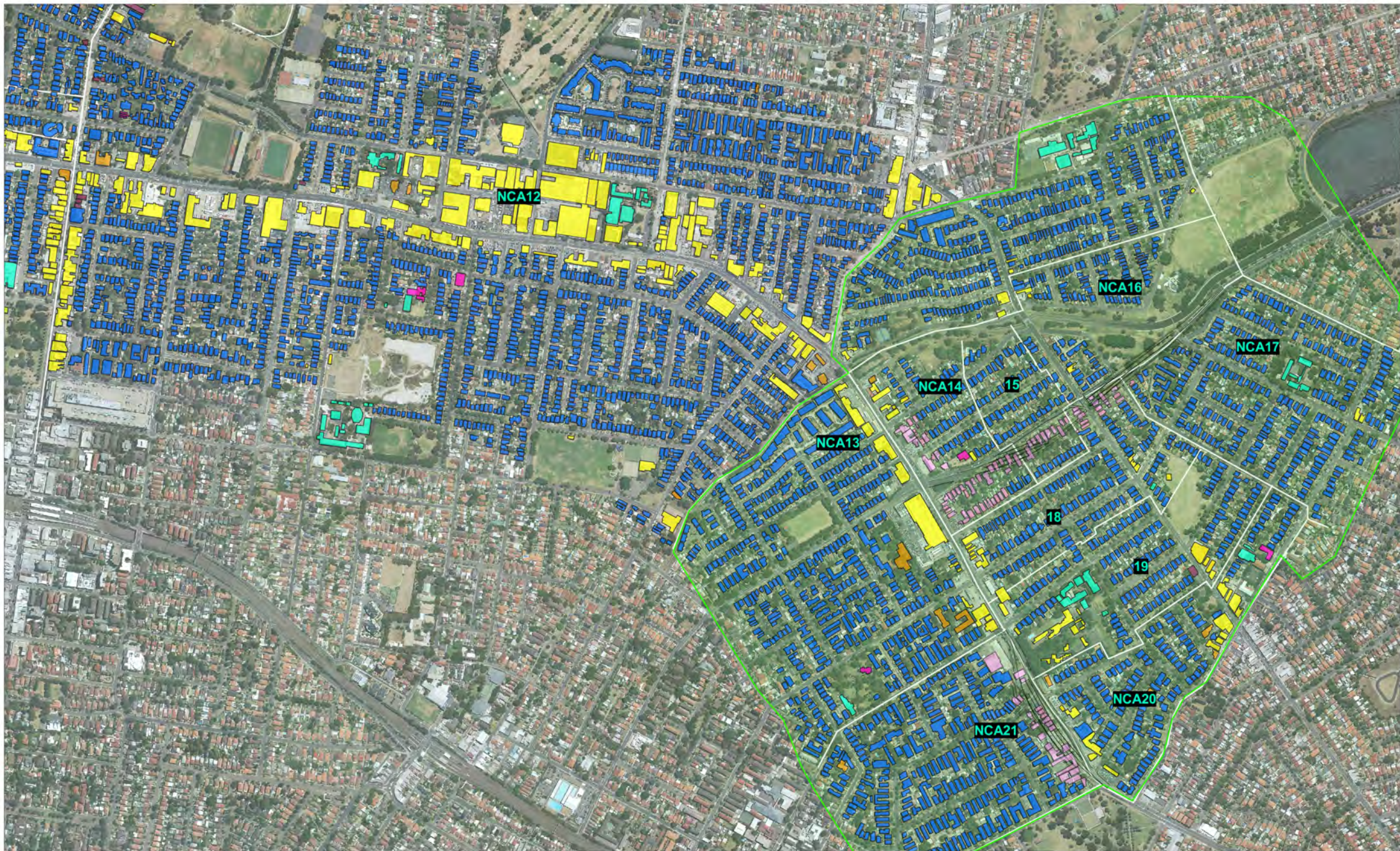
- Proposed Design
 - Acquisitions
 - Highly Urban Area
- Receiver Building Categories**
- Residential
 - Other (Educational)
 - Other (Place of Worship)
 - Commerical
 - Other (Medical)
 - Other (Remaining)

WestConnex Delivery Authority

WestConnex - M4 East

Highly Urban Boundary

The content contained within this document may be based on third party data. SLR Consulting Australia Pty Ltd does not guarantee the accuracy of such information.



2 LINCOLN STREET
LANE COVE
NSW 2066
AUSTRALIA
T: +61 2 9427 8100
www.slrconsulting.com

Project No.:	610.13569
Date:	14/08/2015
Drawn by:	DS
Scale:	1:13,000
Sheet Size:	@ A4
Projection:	GDA 1994 MGA Zone 56



- Proposed Design
 - Acquisitions
 - Highly Urban Area
- Receiver Building Categories**
- Residential
 - Other (Educational)
 - Other (Place of Worship)
 - Commerical
 - Other (Medical)
 - Other (Remaining)

WestConnex Delivery Authority

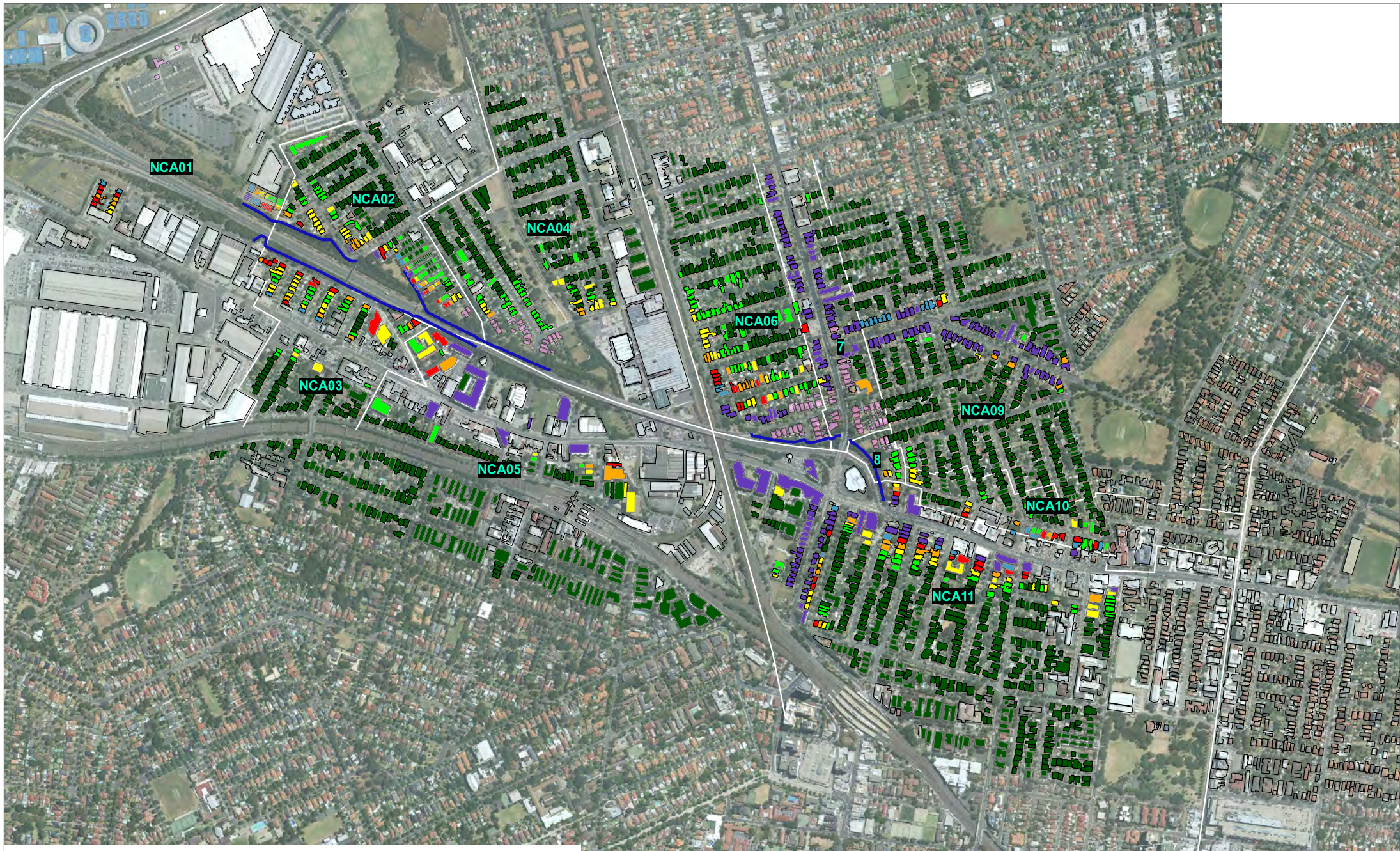
WestConnex - M4 East

Highly Urban Boundary

The content contained within this document may be based on third party data. SLR Consulting Australia Pty Ltd does not guarantee the accuracy of such information.

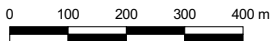
(blank page)

Residential Noise Predictions - No Build



2 LINCOLN STREET
LANE COVE
NSW 2066
AUSTRALIA
T: +61 2 9427 8100
www.slrconsulting.com

Project No.:	610.13569
Date:	16/08/2015
Drawn by:	ALW
Scale:	1:13,000
Sheet Size:	@ A4
Projection:	GDA 1994 MGA Zone 56



Proposed Design	Acquired Buildings	Noise Barrier
Receiver One Storey	Receiver >One Storey	
Predicted Noise Level (LAeq,15hour)		
<55 dB	57 - 59 dB	61 - 63 dB
55 - 57 dB	59 - 61 dB	63 - 65 dB
>65 dB		

WestConnex Delivery Authority

WestConnex - M4 East

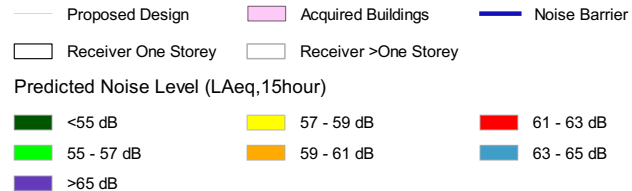
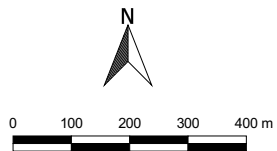
**Residential Noise Predictions
2021, Daytime
No Build**

The content contained within this document may be based on third party data. SLR Consulting Australia Pty Ltd does not guarantee the accuracy of such information.



2 LINCOLN STREET
LANE COVE
NSW 2066
AUSTRALIA
T: +61 2 9427 8100
www.slrconsulting.com

Project No.:	610.13569
Date:	16/08/2015
Drawn by:	ALW
Scale:	1:13,000
Sheet Size:	@ A4
Projection:	GDA 1994 MGA Zone 56



WestConnex Delivery Authority

WestConnex - M4 East

**Residential Noise Predictions
2021, Daytime
No Build**

The content contained within this document may be based on third party data. SLR Consulting Australia Pty Ltd does not guarantee the accuracy of such information.